

# AMANDA - first running experiment to use GRID in production

T. Harenberg, K.-H. Becker, W. Rhode, C. Schmitt  
 University of Wuppertal, Fachbereich Physik, 42097 Wuppertal, Germany

The Grid technologies are in ongoing development. Using current Grid toolkits like the Globus toolkit ? gives one the possibility to build up virtual organizations as defined in ?. Although these toolkits are still under development and do not feature all functionality, they can already now be used to set up an efficient computing environment for physics collaborations with only moderate work. We discuss in this paper the use of such a computing structure in two running experiments - the AMANDA (AMANDA = Antarctic muon and neutrino detector array) neutrino telescope and the DØ experiment at Tevatron, Fermilab. One of the main features of our approach is to avoid reprogramming of the existing software which is based on several programming languages (FORTRAN, C/C++, JAVA). This was realized with software layers around the collaboration software taking care about in- and output, user notification, tracking of running jobs, etc. A further important aspect is the resolution of library dependencies, which occur when a user runs self-compiled jobs on machines where these libraries are not installed. These dependencies are also resolved with these layers.

## 1. Introduction

AMANDA is a running neutrino telescope situated at the south pole. Its collaboration members are spread throughout the world, mainly in North America and Europe. Our aim was to help this collaboration to create a user-friendly, unified access to the standard software repository using existing GRID toolkits. Furthermore, the spreaded computing power of the participating institutes should be not united, but the access to foreign resources should be unified to give any single physicists within the collaboration the possibility to have appropriate computing power available when needed.

Like in other experiments, the standard simulation software within AMANDA has a grown structure and consists of many parts written by several people and in several programming languages (FORTRAN, C/C++, JAVA). To use the GRID software structures, some reprogramming would be needed, which is difficult in running experiments. We show how we solved this with an approach which required no reprogramming of the existing software.

At DØ the situation is different: the experiment has a data access system SAM<sup>1</sup>? which implements some of the basic GRID ideas. Our emphasis here was to show that for some analyses our system can be used as a queuing system to prove that GRID- and non-GRID-parts work smoothly together.

In this paper we start by briefly summerizing the basic idea of the GRID and its different layers and of the different protocols used in such an environment. After that, we describe the GRID system which has been built up at our institute and extended to further collaboration members.

Afterwards, the parts of the collaboration software are identified which have to be rewritten to use this

GRID infrastructure. To minimize the changes we use a different approach at AMANDA, which is being presented. And we show that also within DØ our system can be used. Finally, we present the graphical user interface (GUI) which has been developed to give the physicists an easy access to the GRID.

## 2. An Introduction to GRID

This basic idea of “The Grid” is defined in the Book *The Grid: Blueprint for a New Computing Infrastructure* by I. Foster and C. Kesselman? as: *Infrastructure that enables the integrated, collaborative use of high-end computers, networks, databases, and scientific instruments owned and managed by multiple organizations*. One may compare the GRID to the electrical power grid, where the power plants and the consumers are connected via a large network. The single consumer is not interested where his energy comes from. This is one of the main topics of building up a grid: the user should gain access to all kinds of computer resources (CPU, storage, data, ...) without having to care about the underlying access procedures. The GRID provides him with a **uniform** access mechanisms to all kinds of resources.

To achieve this, the Globus toolkit introduces a software structure, the so called “middleware”, which is a software layer in between the user application and all kinds of resources, as shown in Figure 1. Our work is based on the Globus toolkit ?, which is a common toolkit for GRID developments.

The “middleware” introduces some protocols which are used by the participating computers to communicate. These protocols deal with the authentication of users, the data transfer, and the information interchange to allocate free resources. The following table I gives an overview of these protocols and some of its non-GRID equivalents. Note that this table is not complete and due to the ongoing developments things may change quickly. The last column

<sup>1</sup>SAM = Sequential data Access via Meta-data

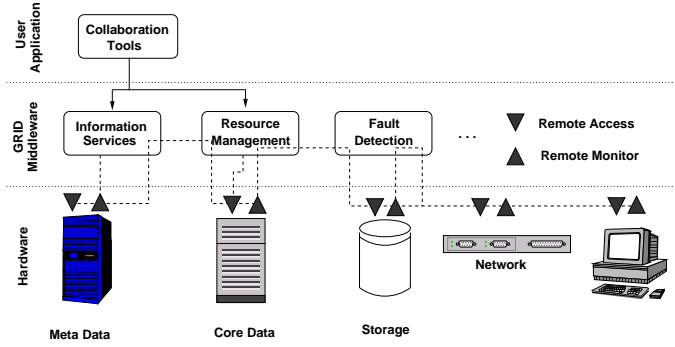


Figure 1: The Role of GRID Services (aka Middleware) and Tools

shows some commands which are implemented in the Globus toolkit to access these protocols from the shell. Within our project all protocols are used with the exception of the Heartbeat Monitor.

Task	Standard Protocol	Grid equivalent	command-line tool(s)
Access to machines	telnet, rlogin, rsh, ssh, ...	GRID Security Infrastructure ?	globusrun, globus-jobrun, ...
Data transfer	ftp, scp, ...	Globus Access to Secondary Storage (GASS) ?, GridFTP ?	globus-url-copy
Resource finding	N/A (external software like OpenLDAP)	Metadata Directory Service (MDS) ?	ldapsearch
Computer monitoring	N/A (external watchdog software)	Heartbeat Monitor (HBM) ?	N/A

Table I Overview over Grid protocols

### 3. A GRID for AMANDA and for DØ

Although current GRID toolkits like the used Globus Toolkit 2 have all basic features needed to build up a GRID included, not all ideas could be implemented without major programming Globus Toolkit itself.

For AMANDA, we focussed the following:

- the user should have access to a central software repository, where the standard offline software is “ready to use”,
- the user should be able to use the batch queuing systems in its own institute and in other insti-

tutes participating in AMANDA without having to care about the local infrastructure, the access policies and the network infrastructure (Firewalls),

- the in- and output files of the software should be transparent to the user, which means that for him it makes no difference where the code runs,
- a list of running and finished jobs should be available to the user, this is a job not covered by the Globus Toolkit yet,
- for mass production the generated data should be available at the centralized data storage,
- besides standard software, “own code” should also be possible to run within the GRID environment, file transfer should be provided and
- the software should care that own user code should run on remote sides even if the binary has been dynamically linked to libraries which may be not installed at the remote side.

These features has been postponed for later versions:

- the system does not search an appropriate batch system itself, as the needs of the software cannot be guessed from the binary. This is especially true for software programmed by the user,
- ports to other operating systems

As mentioned in the introduction, the software within AMANDA shows a grown structure with a variety of programs written in many different programming languages (C, JAVA, FORTRAN, ...). Although a JAVA port of the Globus toolkit exists, enabling FORTRAN code to use the Globus protocols seems to be unfeasable.

Therefore, some code has been written around the standard software which takes care of the in- and output using the GRID protocols. The standard software runs in a kind of sandbox, where all the necessary libraries and files are provided, and after the end of a job, the output is transferred back. For this reason, we create a software server, serving the standard software together with the code around as a bundle. Every time a user requests a run, this software is transferred to the executing node by the queuing system and then executed in a temporary file space. After job termination, all files are cleared up. This is explained in more detail in the following chapter 3.1. And we show that we also can use our system without the Grid components, therefore we present an example where we used it as a queuing system for DØ.

### 3.1. Thoughts towards a GRID in Wuppertal

This chapter first introduces to the situation at the Physics Department in Wuppertal to enhance what a GRID should achieve. After that, the installation of a GRID system in Wuppertal is explained and the Grid-navigator program, which has been developed here, is presented.

The groups in Wuppertal involved in AMANDA and DØ experiments have a well equipped computer infrastructure, but no centralized INTEL-CPU based computing cluster. The aim of our work was to make the CPU power usable which is available in desktop PCs, which are of Pentium-III 1 GHz class. The development of our software was done on several PCs running different flavors of Linux (SuSE Linux Versions from 7.3 to 8.1 and RedHat 7.x). Porting to other platforms as for example DEC alpha has been postponed.

To explain the difference between a GRID system and a conventional batch queuing system we first take a look how a typical conventional approach to set up a queuing system looks like:

The machines are connected via a (fast) local area network (LAN). One machine acts as a central server which holds the disks and a central account service. This disk space is - together with the account information - exported to the cluster machines using protocols like the Network File System (NFS) and the Network Information Service (NIS).

The computer program is executed at one of the cluster machines, but doing so every file (executable, library, program data) is transferred at the moment it is needed via the network to the executing machine. Furthermore, every file created or changed by the software has to be transferred "online" back to the server, as illustrated by fig. 2. This is normally not a problem in fast LANs, but on slower and less reliable wide area networks (WANs), this structure may result in slow job execution, high network load and may completely stop when the network is down for even a short amount of time.

Our approach is different and shown in fig. 3.

We use the GRID protocols to gain access to the machines and to transfer data. We bundle all the software together with the sandbox software, as introduced in chapter 3. This software is stored on a central server which can be unique for every institute. A central data server is set up - this is a machine with a large RAID disk array to store the data in mass production. After the machine which should run the software is chosen by a queuing system (we chose Condor for reasons described later), the software together with all needed libraries is transferred once, so is the user data. Then the program is executed in a temporary file space and after the end of the run, the produced data is transferred back to the user's machine or the

### conventional approach

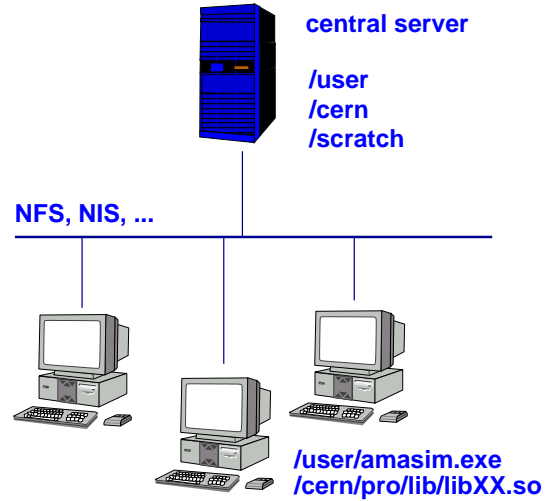


Figure 2: A conventional approach to set up a batch queuing system

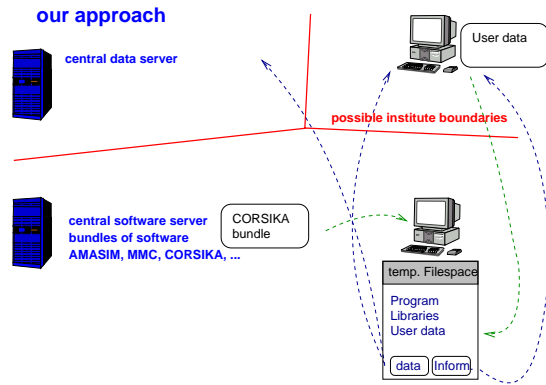


Figure 3: The Wuppertal approach to build up a GRID

the central data server. The red lines show the possible institute boundaries in this scenario. As the GRID protocols give a uniform access to the resources, the access is the same no matter in which institute the resource is, but the software server should be in the same domain as the executing machine to prevent unnecessary data transfer over WANs.

For us, the main aim of our work is to use the existing toolkits and the existing collaboration software together and to exploit the full capacity of all the PCs in our institute. In addition we want to use this as a testbed to understand the gains and potential problems of such a GRID.

The Globus toolkit itself doesn't come with a queuing system, which is needed to choose a machine to run a software bundle. But several external queuing systems are already supported by Globus, for example

LSF, PBS and Condor. Supported means here that Globus knows in principle how to access these batch systems.

For the choice of the batch system we particularly aimed at the optimal use of our desktop PCs in our department. This means that

- during working hours the PCs shouldn't run any jobs when the user is working,
- the system should care of PCs, which are switched off for any reason without any interaction of the system operators,
- the system should choose a free PC on its own.

With our preconditions, the Condor queuing system ? seems to be the best choice. The basic Condor system is a high-throughput-computing environment whose task is to balance the jobs between machines in a way that the idle times are minimized. It supports a mechanism, which suspends jobs when a running machine gets load or interactive work and releases the job again when idle, so it fits our needs. With Condor-G ? a GRID enabled version of Condor is available, but these enhancements are not used here. The GRID enhancements to Condor were written to track the users' GRID jobs – a task which is done here in Wuppertal by our own system. As Condor is not available as Open-Source software, one would rely otherwise on the command line tools which may change.

Furthermore, Condor has a file transfer mechanism included, but this requires that the job is linked against a special library. This mechanism is not used here, instead the GRID protocols are used to transfer files. This has several advantages:

- using plain Condor requires the binary executables to be linked to the Condor library. This is only possible if one has at least access to the object files. So one has to distribute two versions of the software, which can be a disadvantage in a big collaboration.
- the Condor traffic has not to be tunneled separately through the firewalls,

Although Globus supports Condor as a batch queuing system, some small modifications had to be applied to the Globus code to get access to our Condor queue and to optimize the co-operation of these two software packages.

### 3.2. The GRID system in Wuppertal

Based on the thoughts in the previous chapter, we developed our GRID in Wuppertal in the following way:

- besides the Globus Toolkit 2, Condor is installed on every participating PC,
- we have one machine set up as a central software software. There are no special requirements to this machine,
- one machine with Globus installed and appropriate disk space acts as a central data server. This machine does not need to have Condor installed, to prevent this important machine to get high load from batch jobs,
- one machine out of the normal machine acts as a Condor server. On this machine, Globus was configured to access the Condor queue(s).

The Condor system itself can be used by users who don't want or can't use the GRID, but only want to use the Condor queuing system. Both work smoothly together. We tested this with an example  $D\bar{0} \, t\bar{t}$  crosssection using the root-Analysis-Framework ?.

Using the GRID, one gains a uniform access to the queuing systems, so extensions to other institutes (even with queuing systems other than Condor). That means that from the user side of view, he can submit jobs with the same command (or within the GUI) without having to care about how the exact queueing mechanism on the target cluster looks like. We extended our system to a machine at the Aachen Technical University and successfully tested the inter-institute communication. These tests show, that in general modifications to existing Firewalls are needed. Although the range of used TCP ports can be limited in the Globus toolkit, it seems that in this stage of the toolkit all ports above 1024 have to be opened. But implementation of a virtual private network with a third party software (i.e. FreeS/WAN ?) seems however to be unnecessary. All communication between the nodes are encrypted using the OpenSSL library ? and access control is only granted by presenting a valid and signed X.509 certificate. Furthermore, the access to the systems is always controlled by the local administrator.

## 4. The Gridnavigator Program

This chapter introduces the Gridnavigator software developed in Wuppertal. The main two goals of this program is to develop software layers ("sandboxes") about the existing AMANDA collaboration software and to simplify the use of the GRID, which is quite complicated using the standard commands given by the Globus Toolkit.

The Gridnavigator is very modular and consists of two main parts: the already introduced sandbox software and a graphical user interface (GUI). The latter was written to make all the GRID software structure usable to physicist, which do not have detailed knowledge about the GRID terminology, while the sandbox software is a layer around the standard AMANDA software which takes care about the file transfer, executes the AMANDA software with all the needed libraries and informs the user about the job status. The approach of the sandboxes has the following advantages:

- the people developing the standard software can keep their way of handling in- and output, so that
- modifications (i.e. new versions) can be implemented fast and
- the institutes not participating in the GRID have the usual software structure.
- Non-default libraries needed by the AMANDA software are included to minimize installation effort on the desktop machines.
- And - most important - this was much less time consuming than reprogramming parts of the existing software.

These sandboxes are realized so far for the following programs:

- dCORSIKA ? - an air shower generator (mainly written in FORTRAN)
- MMC ? - a code for muon propagation in matter (written in JAVA)
- AMASIM ? - a simulation tool for AMANDA (written in C and FORTRAN)

The complete program - the sandbox and the GUI - is written with the Python programming language ?. As python compiles the program in a byte-code like JAVA ?, the program may be easily ported to other operation systems. The graphics are produced with the tkinter program library ?, which is the standard library for writing graphical user interfaces in Python and is also available for many platforms.

The JAVA code was compiled using the new features of the GNU C compiler gcc ? from version 3 on ?. This compiles JAVA into native machine code, which makes it unnecessary to have a JAVA Runtime Environment (JRE) installed on every machine. We also implemented successfully a sandbox with a JRE, but this approach makes the bundles much bigger.

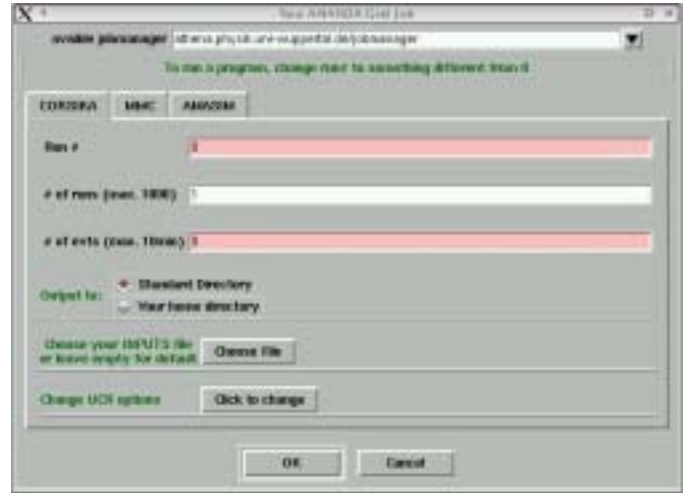


Figure 4: AMANDA standard software dialog

Due to the modularity of the Gridnavigator software, the user can start a software run now via the command line or with the GUI. Picture 4 shows the input screen of the GUI to run the AMANDA software.

The user has the option to get the output back to his home directory or to a centralized directory at his institute (or to any other GRID resource he has access to). To get access to the home directory, a local GASS server<sup>2</sup> is started by the Gridnavigator program. Furthermore, the user is informed via an email about the start and finish of his run if an email address was entered. Error messages are also being send this way.

All needed parameters like the name and directory of the local data server, the local mail server to deliver the mails, etc. are set for each domain separately in the Gridnavigator software, to ensure that software may run at any resource it has been configured for - and of course to which the user has access to.

The sandboxes can be used without the GUI, but the GUI itself uses the sandboxes. Some options of the sandboxes are not accessible via the GUI, but these options are not widely used. The separation in the two parts has the advantage, that in case of heavy mass production, the jobs can be submitted to the batch queues with a script or another program.

In addition to the AMANDA standard software, own analysis software is also supported, which is

<sup>2</sup>See chapter 1 for an explanation of GASS



in general not GRID-enabled. For this reason, another sandbox tool has been written which transfers the in- and output like it does with the standard software. In this case, the user has to provide the program name and the names of the in- and output files. See picture 6 for the input screen. The Gridnavigator then takes care about the needed libraries of this executable. For this reason, a list of all needed libraries is created on the submitting machine. On the remote host, the sandbox code then tries to resolve these dependencies and in case not all libraries are present at this machine, the missing ones are transferred directly from the submitting machine using the GASS protocol. This even works for libraries which are not installed system-wide on the submitting machine. See figure 5 for a scheme of the complete mechanism. Note that this can be more complex in special cases, where a third machine is involved.

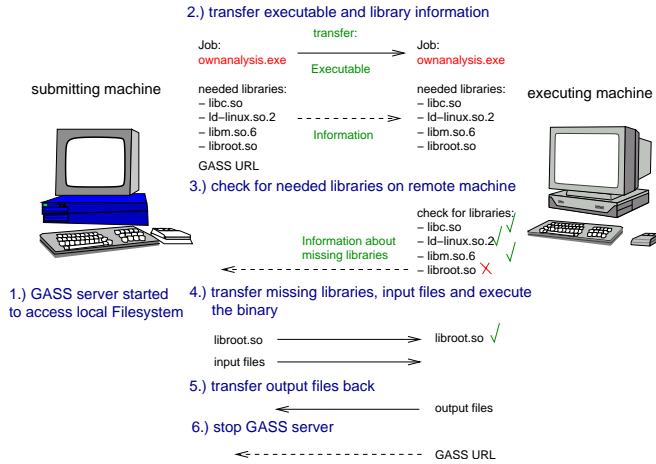


Figure 5: Scheme of the library resolving mechanism and data transfer mechanism. Special cases not illustrated.

This mechanism is in particular a big improvement if one works accross boundaries of just one institute, as it makes it unnecessary to install every library needed by the collaboration (maybe even only by one member of the collaboration) at every institute and make the GRID usable even in the case where a user wrote his own code using libraries not installed anywhere else than on his local machine. Furthermore, this mechanism can help keeping the software repository up-to-date, as new versions of the collaboration software can be integrated very easy. We chose to bundle the libraries of the standard software for now to make the system more fault tolerant.

For his own code, the user has specified the information about in- and output files once, but then he gains the advantage of having his code

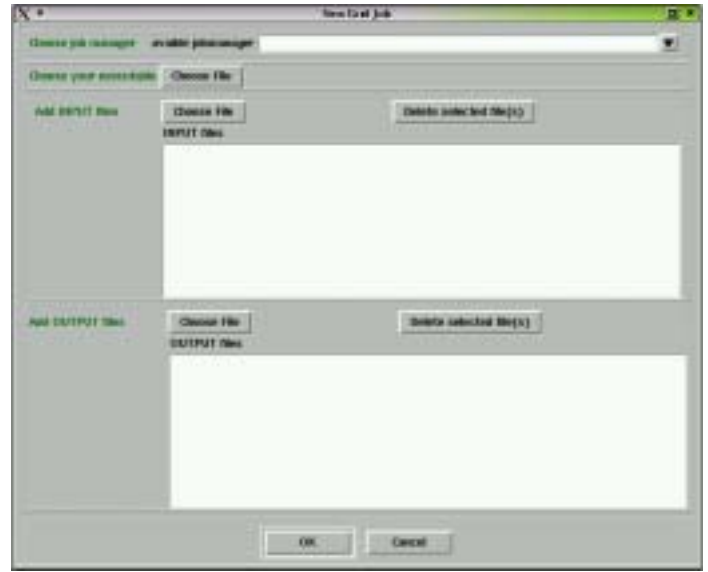


Figure 6: Dialog to run own code in the Grid environment

running even at remote side(s) without any further modifications.

Besides this, one more part is covered by the Gridnavigator GUI:

It tracks all the submitted jobs and informs the user about the status of his jobs. See picture 7 for this. As the Globus toolkit can access different queuing systems, it cannot provide simply a list of all running jobs. Instead it provides the user with a URL<sup>3</sup>, with can be used to resolve the status of the job. Therefore, a list of these job-URLs is stored together with other information by the Gridnavigator program. The user may cancel one or more jobs.

The program also takes care about the creation of the necessary proxy, this is a time-limited cryptographic certificate which enables the user to access the Grid resources. See ? for details of this mechanism. The user can “log-in” to the Grid using the GUI and may specify the lifetime of the proxy.

## 5. Experience and Advantages

We installed this system on 18 PCs in our institute. These have several versions of the LINUX

<sup>3</sup>URL = Uniform Resource Locator. The URL have the same format as widely used in the worldwide web (WWW)



Figure 7: The main screen of the Gridnavigator program

Operating Systems (SuSE Linux Versions 7.3, 8.0 and 8.1 and RedHat 7.x) and different configurations concerning disk space, memory and CPU. No general problems occurred.

One problem occurred when trying to run the AMAsim software package. This package requires quite a lot amount of memory (approx. 512 MB per instance). When such a job was started on a PC which less RAM, then this disturbs the normal operation quite a lot, due to the swapping activity of the LINUX operating system. We solved this situation by defining two Condor queues, one consists of all PCs, one only included the well-equipped ones. On the Condor server, another jobmanager was defined with special parameters passed to the Condor queuing system. A jobmanager is a gateway between the GRID and a queuing system in the Globus Toolkit. Sending AMAsim jobs to the one queue with the special parameters and all others to the general queue solved now our problem.

With this system, we achieved in average 200 million primary CORSIKA events per week with one mouse click. The situation before was running CORSIKA on several Sun UltraSPARC II workstations, where we could get around 15 million primary events per week with a huge overload in administration (connect to every single machine, start the program, transfer back the output, etc.).

We extended the system to the Technical University of Aachen, where we had thanks to Dr. Rolf Steinberg the possibility to test inter-institute communication. This succeeded when opened all TCP ports above 1024 on the in-

stitutes' firewalls. The Certification Authority could be installed, so that users from one side had automatically access to the GRID resources on the other side. We could successfully test our software layers ("sandboxes"), so AMANDA software could run in Aachen, although it was not separately installed. This system served 4 AMANDA diploma students in Wuppertal as basis for their Monte Carlo production.

The example  $D\bar{D}$  analysis using the plain Condor environment archived 2000 grid points per hour.

We tested successfully the library resolving mechanism using some software of the DELPHI collaboration. DELPHI is one of the former experiments operated at the LEP electron-positron accelerator at CERN, Geneva.

## 6. Summary

We presented a way how an existing GRID toolkit - the Globus Toolkit 2 in our case - can be used to establish and run a GRID system within a physics collaboration and how the physicists can profit from these software structures.

We established successfully such a system in Wuppertal using the Globus toolkit and the Condor queuing system. We presented our approach to build up a GRID with a software server and a data storage server.

We extended the system with success to other institutes.

We showed an approach of how to run existing collaboration software, which is not GRID-enabled yet, in such a GRID environment. We presented the "Gridnavigator" software, which was developed in Wuppertal. This software has two parts: some "sandboxes" and a graphical user interface.

The "sandboxes" are software layers around the existing collaboration software, which takes care about the needed libraries, the file transfer, the user notification, etc. A similar software was written to make user code usable, this is code which has not been bundled by anybody to run in a GRID environment and which is not GRID-enabled. This sandbox cares - like in the previous case - about the file transfer, the execution in a temporary file space and the user notification. Furthermore, it resolves library dependencies by transferring those libraries which are not installed on the target system from the machine where the job was submitted from. This is in most cases the machine where the software was

build on. This feature is very important nowadays, where most of the existing software has not been rewritten to be used in a GRID environment.

For an easy access to the system, we presented the Gridnavigator program, a graphical user interface to our Grid system. Using that, the user can submit bundled and own software without having to care about the underlying GRID software structure. Furthermore, it keeps track of submitted jobs and gives the user the possibility to cancel one or more of his jobs.

We tested the “Gridnavigator” with the three main parts of the AMANDA offline software chain. These work smoothly within the GRID

environment. Furthermore, we tested the support of own user software by running code from the DELPHI collaboration within the GRID. And we tested that the Condor queuing system itself can be used without using the GRID by running a  $D\bar{D}$  analysis run.

Our work now gives the AMANDA collaboration the possibility to build up a “virtual organization” by connecting the participating institutes with the Globus toolkit and use our program to access the GRID without knowledge of the underlying GRID software layer. Jobs can be submitted to foreign institutes when local resources do not fit the needs of the user. Access to produced mass production data can be unified.