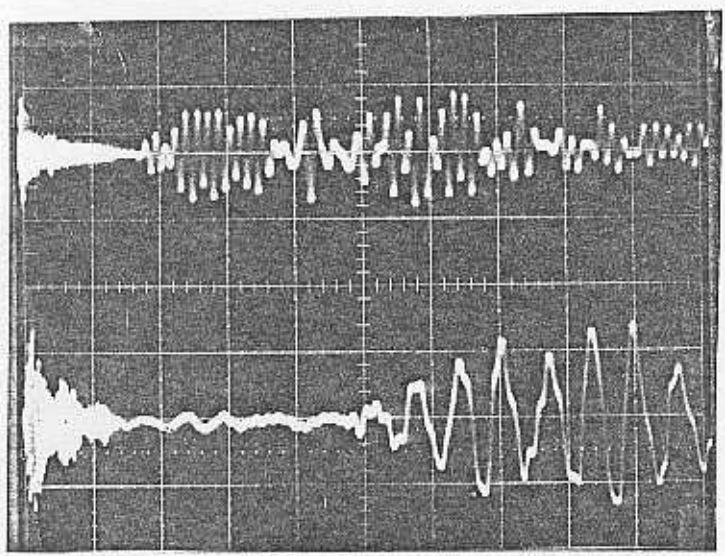
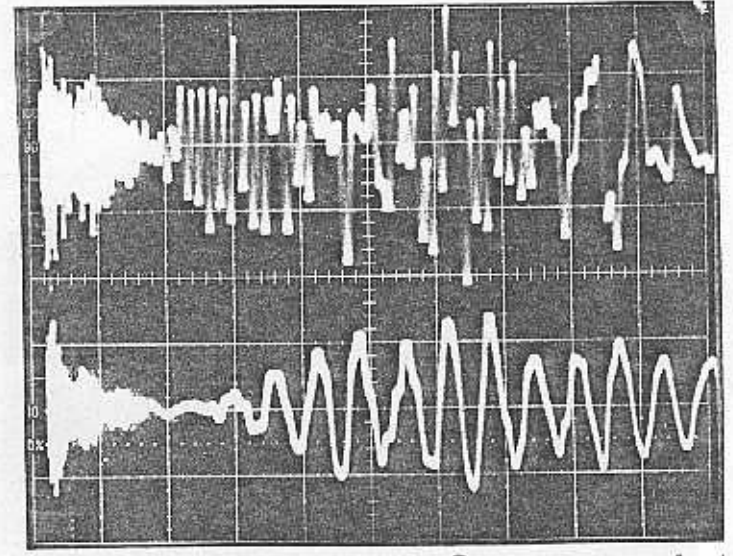


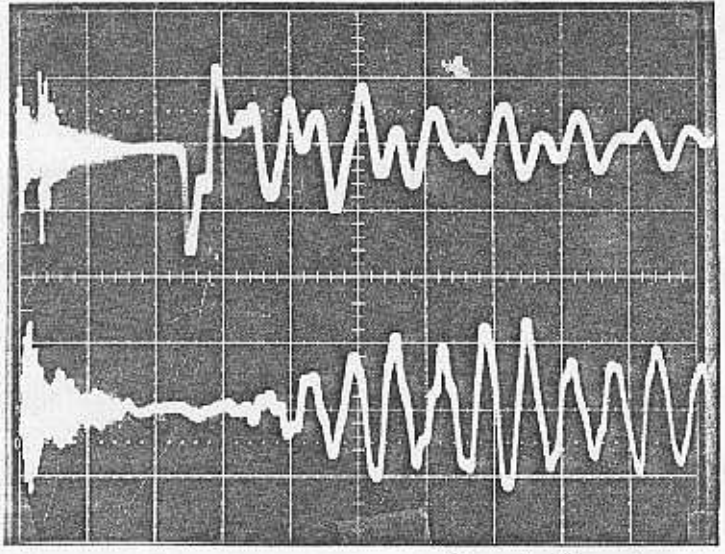
Bottom trace - all pictures - 0,006 "SS" near 10mV etc -



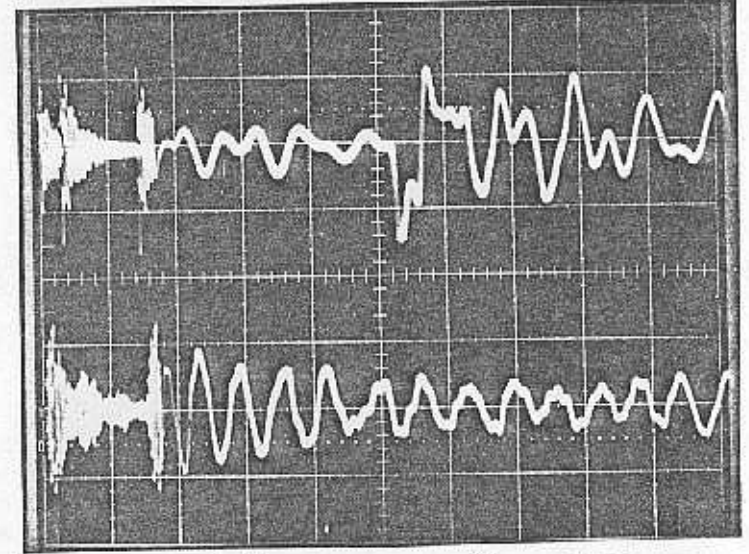
Top: bellows 50 mV, 500ns for 1.37cm then 20 ns



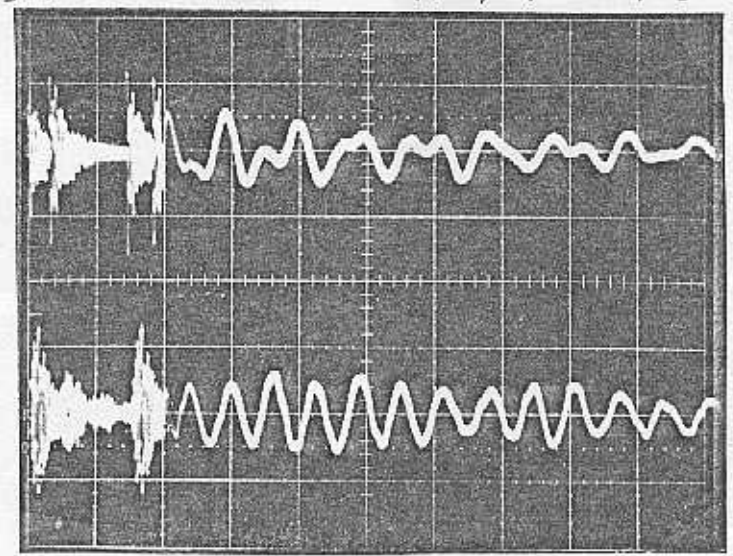
Top: top of shield 5mV, 500ns for 1.42 cm then 20 ns



Top: gap 1V, 500 ns for 1.4cm then 20 ns



Top: gap 1V, 500 ns for 1.7cm then 20 ns



Top traces: gap 1V, 500 ns for 2.0cm then 20 ns

Figure 6

Cable length measurements by reflection times for relative timings

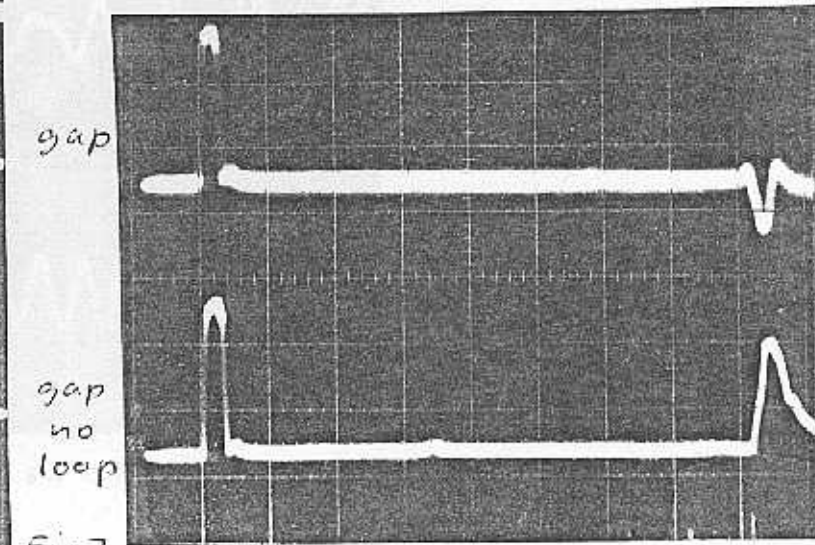
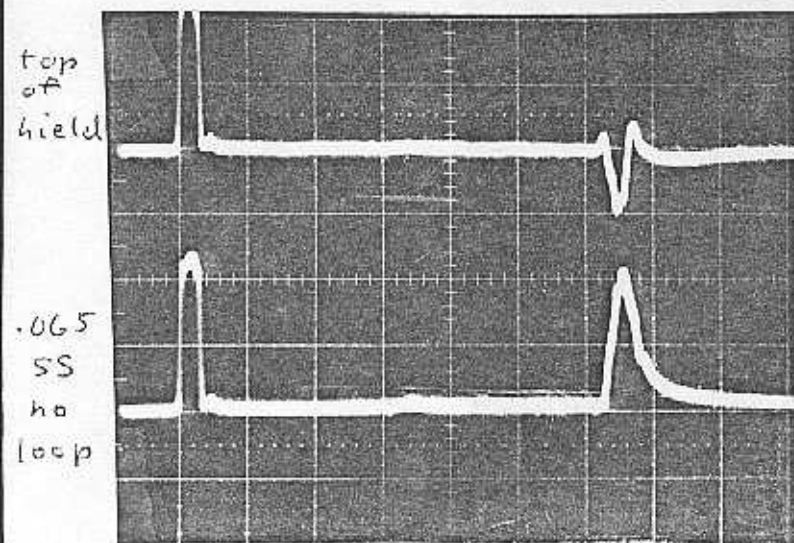
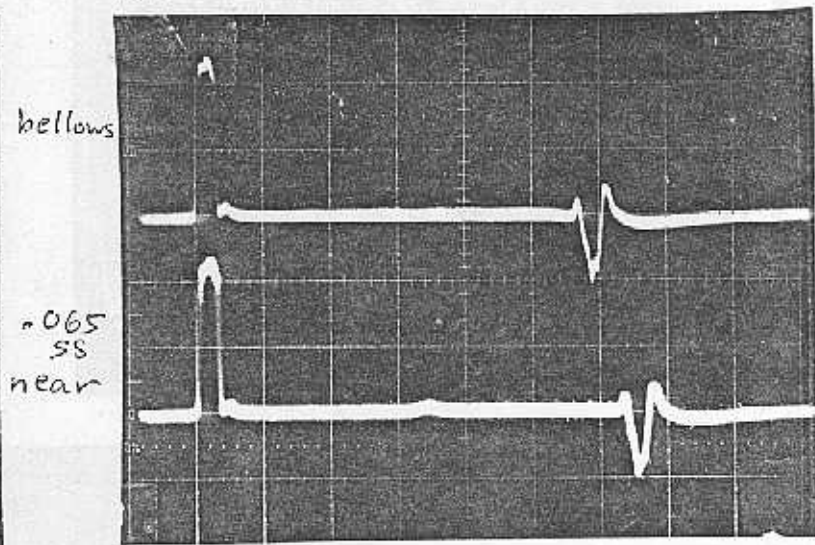
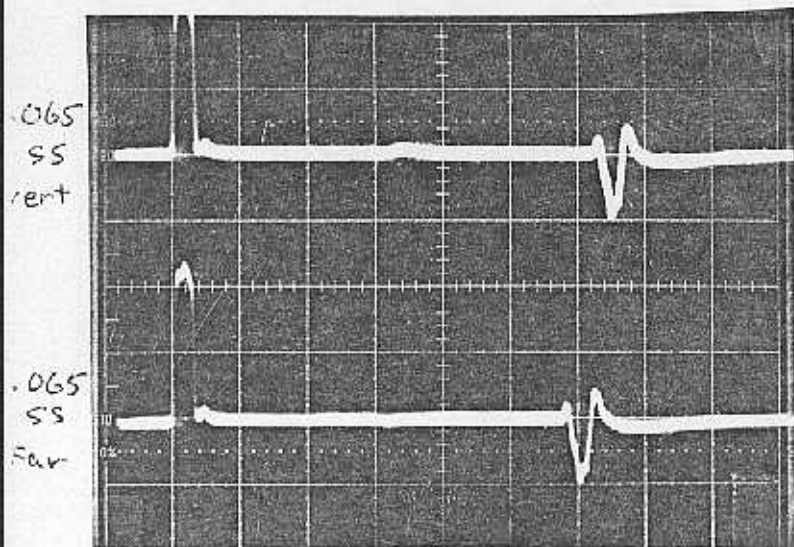
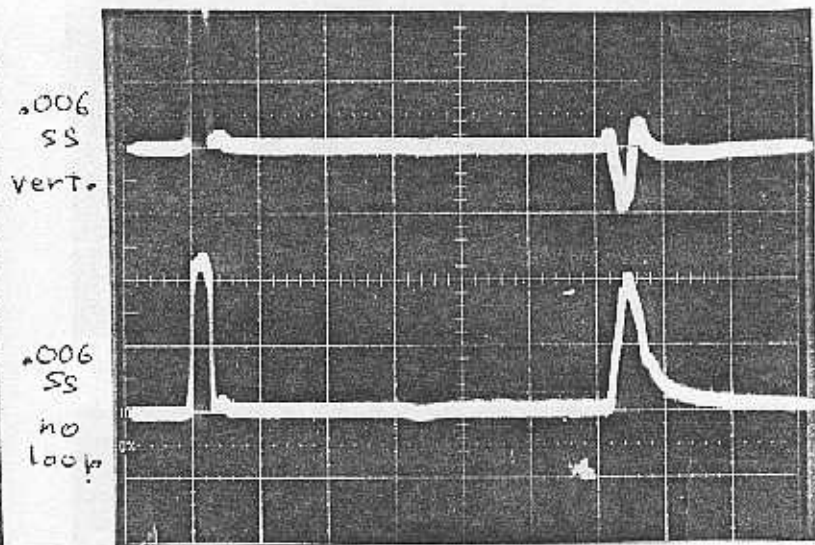
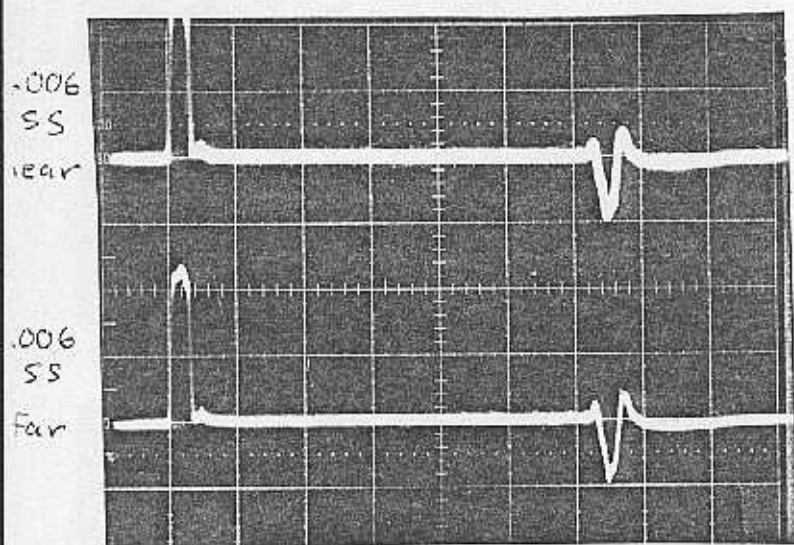
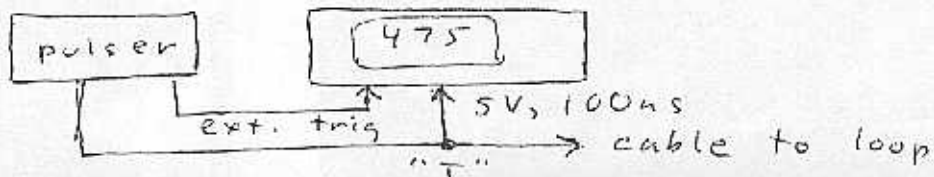


Fig 7