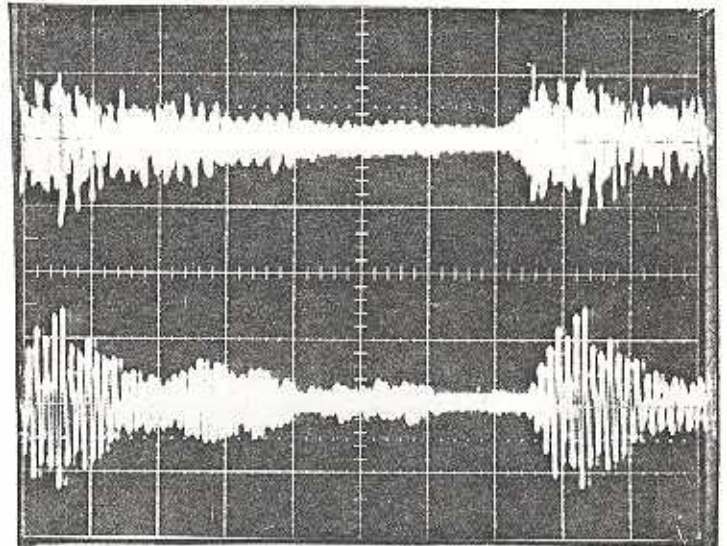
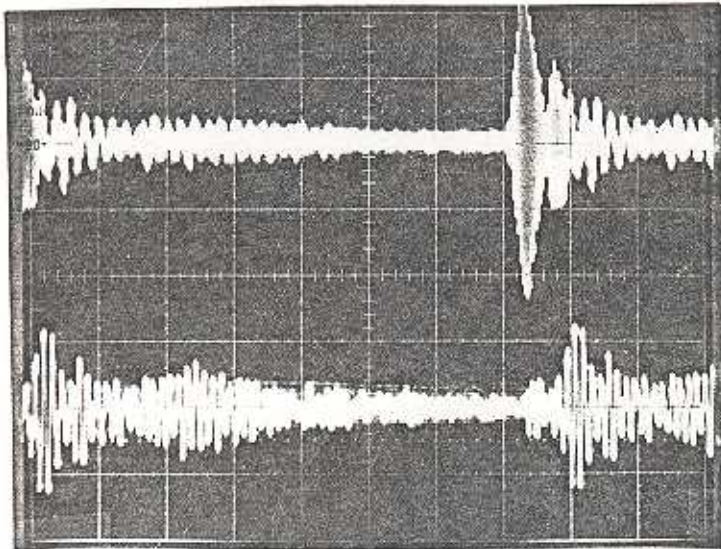


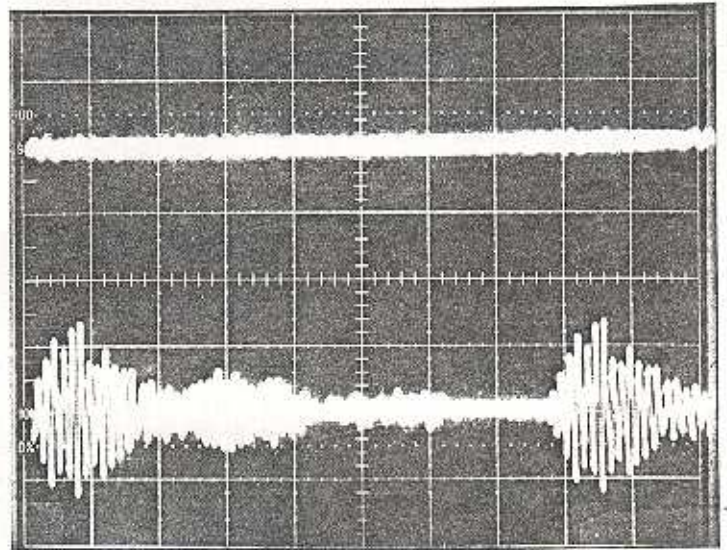
0.065" SS, near, 50 mV
 0.006" SS, near, 10 mV → trig
 e⁻, 100 ns



0.065" SS, no loop, 2 mV
 0.006" SS, near 10 mV
 e⁻, 100 ns



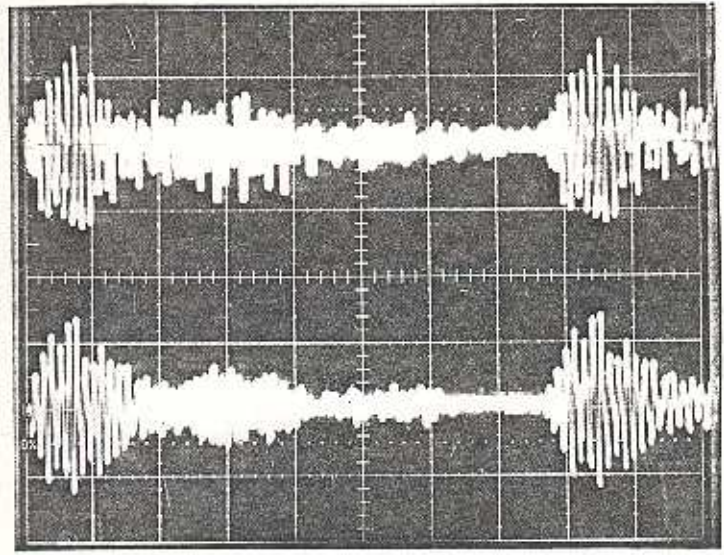
0.065" SS near 50 mV
 0.006" SS near 10 mV
 e⁺ only, 100 ns



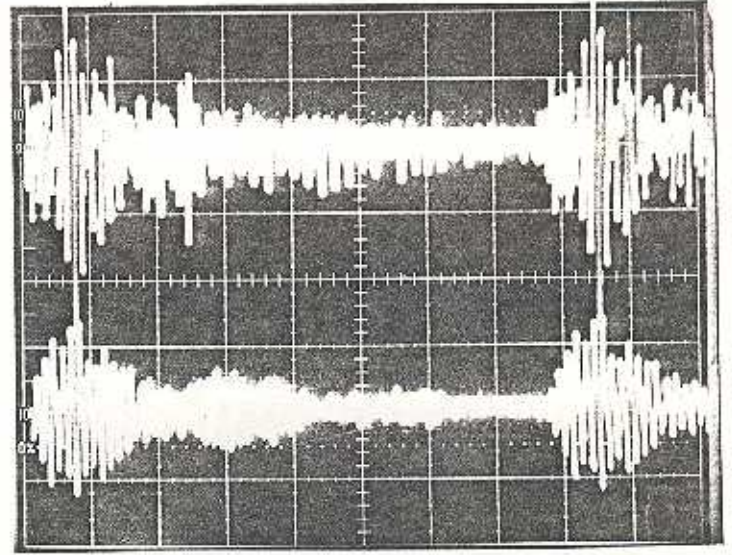
0.006" SS no loop 2 mV
 0.006" SS near 10 mV
 e⁺ 100 ns

Figure 2

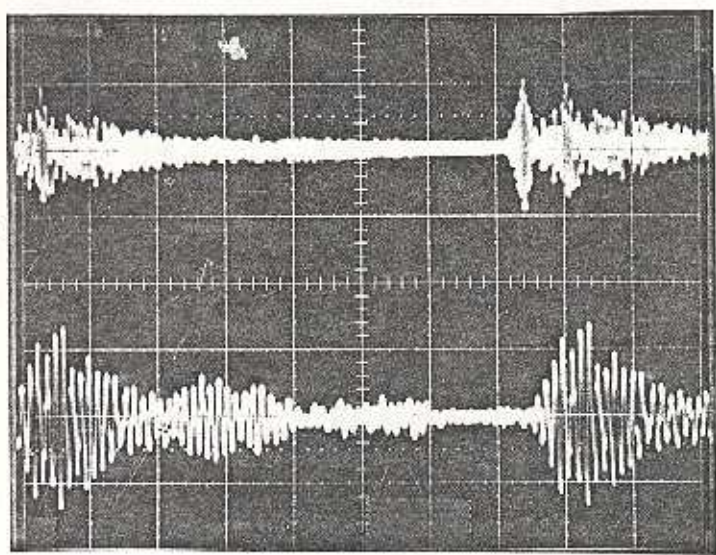
Bottom trace - all pictures - 0.006" SS near 10mV
etc - 100ns



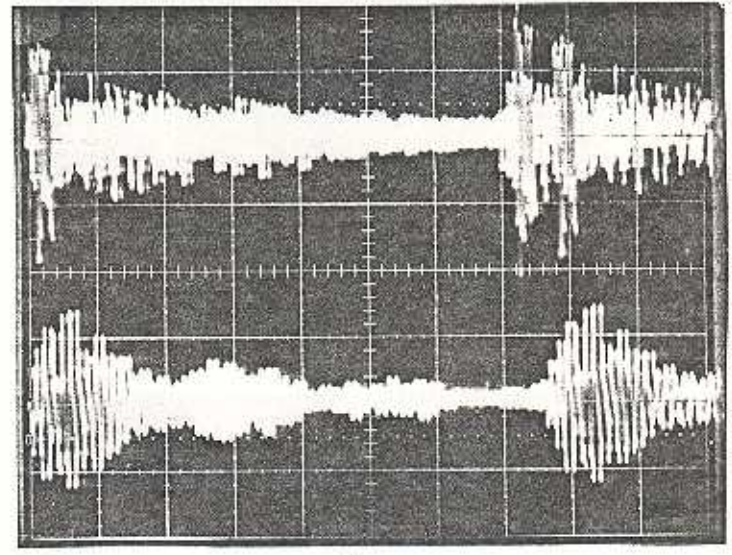
top: 0.006" SS far 5mV



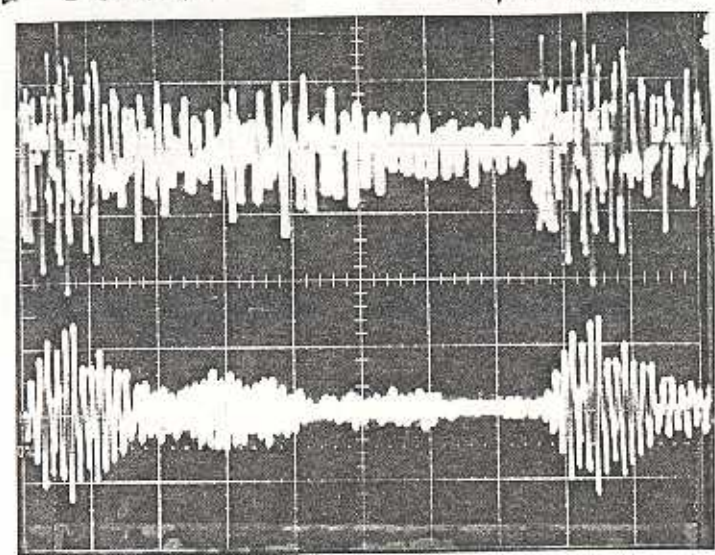
top: 0.006" SS vertical 5mV



top: 0.065" SS far 50mV



top: 0.065" vertical 20mV



top: loop on top of shield 5mV

Figure 3