

Transverse-to-Longitudinal Emittance Exchange to Improve Performance of High-Gain Free-Electron Lasers

P. Emma, Z. Huang
Stanford Linear Accelerator Center, Stanford, CA 94309

K.-J. Kim
Argonne National Laboratory, Argonne, IL 60439

P. Piot
Northern Illinois University, DeKalb, IL 60115 and
Fermi National Accelerator Laboratory, Batavia, IL 60510

Abstract

The ability to generate small transverse emittance is perhaps the main limiting factor for the performance of high-gain x-rays free-electron lasers (FELs). Noting that beams from an rf photocathode gun can have energy spread much smaller than required for efficient FEL interaction, we present a method to produce normalized transverse emittance at or below about $0.1 \mu\text{m}$, which will lead to a significantly shorter length undulator as well as a lower electron beam energy for an x-ray FEL project. The beam manipulation consists of producing an unequal partition of the initially equal emittances into two dissimilar emittances by a flat beam technique and exchanging the larger transverse emittance with a small longitudinal emittance. We study various issues involved in the manipulation. In particular, a new emittance exchange optics we found enables an exact emittance exchange necessary for this scheme.

1. Introduction

Accelerated beams often need to be manipulated in phase space to optimize their efficiency for application. It has been noted [1] that the phase-space distribution of an electron beam from a laser-driven rf photocathode is not ideally matched to the operation of high-gain x-ray free-electron lasers [2,3]. The transverse normalized emittance of an electron beam is properly matched to an x-ray beam if

$$\gamma\epsilon_x \text{ and } \gamma\epsilon_y \leq \frac{1}{4\pi} \gamma\lambda_r . \quad (1)$$

Here γ is the electron energy in units of electron rest energy, and λ_r is the FEL wavelength. For a $1\text{-}\text{\AA}$ FEL driven by a 15-GeV electron beam, the normalized emittance of the matched electron beam is about $0.2 \mu\text{m}$. However, the normalized transverse emittance from a state-of-the-art laser-driven rf photocathode gun is about an order of magnitude larger at about 1-nC charge:

Submitted to PRSTAB

$$\gamma \varepsilon_{x,y}^G \approx 1 \mu\text{m}. \quad (2)$$

At lower charge the transverse emittance is limited by thermal emittance associated with the photoemission process. On the other hand, the uncorrelated rms energy spread from the rf gun σ_E^G is quite small. The average value measured experimentally for a 4-nC charge is about 4 keV [4]. For a much lower charge beam considered in this paper, we will assume

$$\sigma_E^G \approx 1.5 \text{ keV}, \quad (3)$$

or, in terms of the relative energy spread immediately after the gun at an energy $E_G \approx 6 \text{ MeV}$:

$$\sigma_\delta^G \equiv \sigma_E^G / E_G \approx 2.5 \times 10^{-4}. \quad (4)$$

Here σ_δ^G is the rms relative energy spread that, when compressed by up to a factor of 100 and accelerated to 15 GeV, is no more than 1×10^{-5} , or one order of magnitude smaller than necessary for avoiding gain reduction in an x-ray FEL. With the typical rms bunch length of $\sigma_z \approx 20 \mu\text{m}$ (about 4 kA of peak current at a 1-nC bunch charge) and taking an increased energy spread of $\sigma_\delta \approx 1 \times 10^{-4}$ at 15 GeV, the normalized longitudinal emittance is about $\gamma \sigma_\delta \sigma_z \approx 60 \mu\text{m}$. In fact, this order-of-magnitude energy spread increase is necessary to suppress the microbunching instability associated with the bunch compression process (see Ref. [5] and references therein). Thus we should ask whether it is possible to trade the excessively small energy spread with the transverse emittance, so that the transverse normalized emittance can be reduced to $0.1 \mu\text{m}$ or smaller. We find that the answer is affirmative by a beam manipulation involving the flat beam technique and emittance exchange.

In section 2, we first describe how a beam of normalized transverse and longitudinal emittance of, respectively, $1 \mu\text{m}$ and $0.1 \mu\text{m}$ with a peak current of 100 A at the gun cathode can be manipulated to produce a beam of normalized transverse and longitudinal emittance of, respectively, $0.1 \mu\text{m}$ and $10 \mu\text{m}$ with a peak current of 1 kA. We then show that the manipulated beam improves the performance of x-ray FELs significantly. It is shown that the space-charge effect does not degrade the cathode emittance due to the fact that the beam at the cathode is a pancake shape with a large aspect ratio. We also show that the parameters for the flat beam technique are reasonable. In section 3, we describe an optical arrangement giving rise to the exact emittance exchange necessary for our manipulation. The discussion up to this point is based on analytical arguments on linear transport elements. To estimate effects associated with a practical system, such as the nonlinearities, we have performed a simulation study of the beam manipulation in section 4. Since the beams with a large aspect ratio considered in section 2 are difficult to handle, we started from a cathode beam with smaller transverse emittance and less charge than that considered in section 2 in this proof-of-principle simulation study. The simulated performance of the injector, consisting of a photocathode gun and a flat beam transformer, is found to be close to the ideal case even after taking into account the space-charge effect. The simulation of the exchanger reveals that the higher-order effects are not negligible. Fortunately, however, it turns out that those effects can be made to cancel each other by adjusting the transverse-longitudinal correlation present in the injector output. Also, the emittance degradation due to the coherent synchrotron radiation turns out to be not serious. Section 5 concludes the paper, noting that the emittance exchanger has some interesting consequences on beam jitter, the beam produced in section 4 is not round but has a good FEL

performance, and the beam manipulation technique proposed here has other applications, such as obviating the electron damping ring in a linear collider.

2. The Phase-Space Manipulation Scheme

2.1. The Scheme

We begin with the 4-D transverse emittance from the gun, given by Eq. (2). By using the flat beam technique, we change the partition of the emittances so that

$$(\gamma\epsilon_x, \gamma\epsilon_y) \rightarrow (10, 0.1) \mu\text{m}. \quad (5)$$

The beam current at the gun is taken to be the same as the Linac Coherent Light Source (LCLS) value

$$I_G = 100 \text{ A}. \quad (6)$$

The rms length of the bunch at the gun is chosen to be

$$\sigma_z^G = 34 \mu\text{m}, \quad (7)$$

so that the longitudinal emittance in view of Eq. (2) becomes

$$\gamma\epsilon_z^G = \sigma_z^G \frac{\sigma_E^G}{mc^2} \approx 0.1 \mu\text{m}. \quad (8)$$

This represents a bunch charge of about 40 pC. We then exchange the x and z emittances to obtain

$$(\gamma\epsilon_x, \gamma\epsilon_y, \gamma\epsilon_z) \rightarrow (0.1, 0.1, 10) \mu\text{m}. \quad (9)$$

At some convenient point before the undulator, the beam is adjusted in the longitudinal phase space (bunch compression) so that the energy spread is increased to the maximum allowed by the condition that FEL gain is not degraded:

$$\sigma_\delta \approx 1 \times 10^{-4}, \quad (10)$$

which is smaller than the dimensionless FEL parameter ρ (typically around 5×10^{-4} for an x-ray FEL). For a 15-GeV beam, the rms energy spread is then 1.5 MeV, and the rms bunch length after the adjustment is

$$\sigma_z \approx 3.4 \mu\text{m}. \quad (11)$$

This is ten times shorter than the bunch length at the gun. The beam current at the FEL will therefore increase by a factor of 10:

$$I_f \approx 1.0 \text{ kA}. \quad (12)$$

2.2. Application for X-Ray FELs

To show the usefulness of the phase-space manipulation, we consider a ‘‘Green field’’ FEL [1] operated at $\lambda_r = 0.4 \text{ \AA}$. A permanent magnet undulator with a period of 3 cm is used. We also assume that the beta function in the undulator is optimized to produce the shortest gain length. Two possible beam configurations are considered. The electron beam in case (a) is similar to the LCLS, i.e., $\gamma\epsilon_x = 1 \mu\text{m}$ and a peak current $I_f = 3.5 \text{ kA}$ after bunch compression, while the electron beam in case (b) is the manipulated one as discussed above, i.e., $\gamma\epsilon_x = 0.1 \mu\text{m}$ and a peak current

$I_f = 1.0$ kA. Both beams have the same uncorrelated relative energy spread at 1×10^{-4} . Figure 1 shows the power gain length computed from Xie's fitting formula [6] versus the undulator parameter K for both cases. The gain length for the case (b) is smaller by a factor of 2 or more. The length of the undulator will be reduced by a similar factor, reducing the construction cost as well as the operational complexity.

Note also that the gain length for case (b) changes little as K increases from 1.5 to 4, while it decreases significantly for case (a). Therefore, the K value may be chosen to be small, $K \approx 1.5$, for the latter case while it needs to be large, $K \approx 4$, for the former case in order to limit the length of the undulator. The smaller emittance therefore has additional advantages: the undulator requires less magnetic material, and the electron energy required for 0.4-Å radiation is smaller.

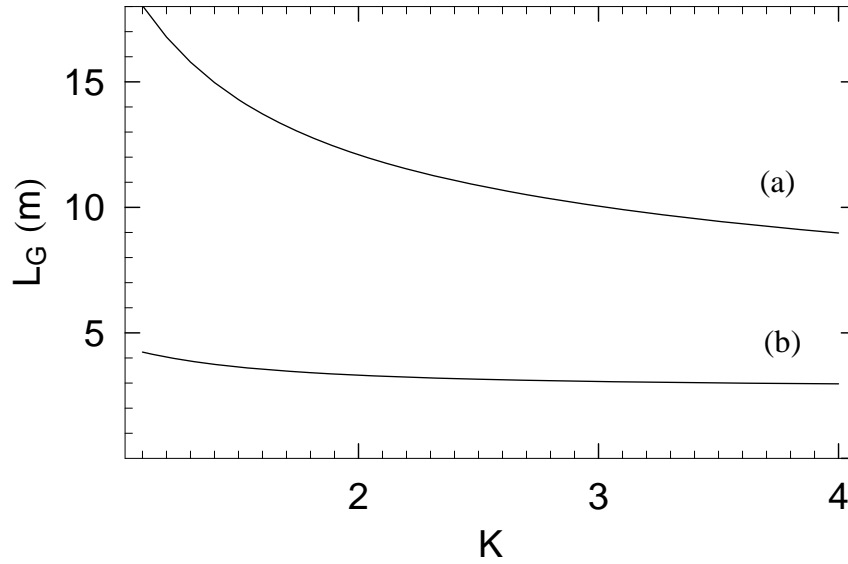


Figure 1. Power gain length L_G of an x-ray FEL at 0.4 Å versus the undulator parameter K for (a) a beam with a normalized transverse emittance of 1 μm and a peak current of 3.5 kA, and (b) a beam with a normalized transverse emittance of 0.1 μm and a peak current of 1.0 kA. The electron beam energy in both cases is adjusted according to the FEL resonant condition, with the relative rms energy spread at 1×10^{-4} .

2.3. Space-Charge Effects on the Gun Emittances

Let us now consider in more detail some of the processes in the above manipulation of the phase-space distribution. Is the small longitudinal emittance, Eq. (8), consistent with the space-charge force? The emittance arising from the space charge effect in the rf photocathode gun can be written as [7]

$$\gamma \mathcal{E}_i^{SC} = \frac{\pi}{4} \frac{1}{\sin \phi_0} \frac{2mc^2}{E_0} \frac{I_G}{I_A} \mu_i (A). \quad (13)$$

Here $i = x, y, \text{ or } z$; ϕ_0 is the emission phase; E_0 is the peak electric field; $I_A \approx 17$ kA is the Alfvén current; and $\mu_i(A)$ is a form factor depending on the aspect ratio $A = \sigma_x^G/\sigma_z^G$. The approximate formulae of the form factor for a Gaussian beam are [7]

$$\mu_{x,y}(A) = \frac{1}{3A + 5}, \quad (14)$$

$$\mu_z(A) = \frac{1.1}{1 + 4.5A + 2.9A^2}. \quad (15)$$

If we use the spot sizes $\sigma_x^G = 0.6$ mm and $\sigma_z^G = 34$ μm , we obtain $A \approx 18$, a large aspect ratio making the form factor very small. Using the LCLS values for the peak gun field $E_0 = 120$ MV/m, $I_G = 100$ A, and assuming $\pi/(4 \sin \phi_0) \approx 1$, we obtain

$$\gamma \varepsilon_{x,y}^{SC} \approx 1.0 \mu\text{m} \quad (16)$$

$$\gamma \varepsilon_z^{SC} \approx 0.1 \mu\text{m}. \quad (17)$$

Therefore the longitudinal emittance due to the space-charge effect is indeed very small and consistent with Eq. (7). The transverse emittance is also small, consistent with Eq. (2), implying that the emittance compensation [8] may not be necessary for a beam with such large aspect ratio and low charge.

2.4. The Flat Beam Technique

The flat beam technique is a method to produce two dissimilar emittances starting from a round beam [9,10]. It begins with the process in which an electron beam in thermal motion inside a cathode is born into a region with an axial magnetic field B , suddenly acquiring canonical angular momentum. The beam is then brought into a field-free region and the angular momentum is removed by a triplet of skew quadrupole magnets [11]. In this process the initially equal emittances, Eq. (2), are partitioned into unequal emittances ($\gamma \varepsilon_+$, $\gamma \varepsilon_-$), preserving the product: $\gamma \varepsilon_x \times \gamma \varepsilon_y = \gamma \varepsilon_+ \times \gamma \varepsilon_-$. An unequal partitioning of equal emittances is not possible in a symplectic process; in a symplectic process the emittances in different directions can either remain the same or be exchanged among themselves [12]. The flat beam technique avoids this limitation because the process of beam birth in a magnetic field is non-symplectic. The technique was theoretically analyzed in Refs. [13] and [14].

The emittance ratio after the flat beam technique is given by

$$\frac{\varepsilon_+}{\varepsilon_-} \approx \left(\frac{eB(\sigma_x^G)^2}{mc\gamma \varepsilon_x^G} \right)^2 \gg 1, \quad (18)$$

where e is the electron charge, m is the electron mass, and c is the speed of light. The ratio is 100 in the present case and the required magnetic field is modest: $B = 470$ G. Experimentally, the flat beam technique was demonstrated at the Fermilab/NICADD [15] Photo Injector Laboratory (FNPL) [16-19]. The best partition of emittances recently achieved is $(\gamma \varepsilon_+, \gamma \varepsilon_-) \approx (40, 0.4)$ μm [20]. Note that the emittance ratio is 100, although the product is an order of magnitude larger than what is needed for the scheme in this paper.

3. Optics for Emittance Exchange

A study of emittance exchange has been performed [21] with the beam transport system, which produces the transverse-to-longitudinal emittance exchange constructed from a four-dipole chicane and a dipole mode cavity. The first half of the chicane (a dogleg bend) consists of a pair of bending magnets of opposite polarities separated by a free space of length L with the x - z 4×4 transfer matrix (ignoring the vertical, or non-bend-plane coordinate):

$$\mathbf{M}_D(\eta, \xi, L) = \begin{bmatrix} 1 & L & 0 & \eta \\ 0 & 1 & 0 & 0 \\ 0 & \eta & 1 & \xi \\ 0 & 0 & 0 & 1 \end{bmatrix}. \quad (19)$$

Here η and ξ are, respectively, the dispersion and the momentum compaction generated in the dogleg. The transfer matrix for a thin-lens dipole-mode cavity is of the form [21]

$$\mathbf{M}_C(k) = \begin{bmatrix} 1 & 0 & 0 & 0 \\ 0 & 1 & k & 0 \\ 0 & 0 & 1 & 0 \\ k & 0 & 0 & 1 \end{bmatrix}, \quad (20)$$

where k is related to the cavity voltage V_0 , cavity dimension a , and beam energy in the cavity E_0 by

$$k \equiv \frac{V_0}{aE_0}. \quad (21)$$

The emittance exchange scheme studied in Ref. [21] consists of a dipole mode cavity flanked by two doglegs of opposite sign (*i.e.*, the cavity is in the middle of a chicane) with the transfer matrix:

$$\mathbf{M}_{EX} = \mathbf{M}_D(-\eta, \xi, L)\mathbf{M}_C(k)\mathbf{M}_D(\eta, \xi, L). \quad (22)$$

It was shown that Eq. (22) produces an approximate emittance exchange if $1 - (k\eta)^2 = 0$. The exchange in this system is not perfect, due to a residual transverse-to-longitudinal coupling term, although this was not a significant limitation with the 5-to-1 emittance exchange ratio described in Ref. [21]. However, as the larger initial emittance is increased ($\gamma\epsilon_{x_0} = 10 \mu\text{m}$) and the smaller initial emittance is decreased ($\gamma\epsilon_{z_0} = 0.1 \mu\text{m}$), the limitation due to imperfect exchange becomes significant. The residual coupling term can be reduced to arbitrarily small levels by decreasing the dispersion in the chicane (*i.e.*, weaker chicane bends and stronger rf kick). However, a second-order dispersion aberration arises after the cavity, which is inversely proportional to the dispersion and therefore limits this coupling reduction.

Fortunately, an exact exchange optics was found by one of us (K.-J. Kim) [22] that is similar to that described above, but with the second dogleg identical to the first one as shown in Fig. 2. The corresponding transfer matrix is

$$\mathbf{M}_{EX} = \mathbf{M}_D(\eta, \xi, L)\mathbf{M}_C(k)\mathbf{M}_D(\eta, \xi, L). \quad (23)$$

If the dispersion η and the kick strength k are chosen so that

$$1 + k\eta = 0, \quad (24)$$

it is then easy to show that the 4x4 x - z transfer matrix becomes

$$\mathbf{M}_{EX} = \begin{bmatrix} \mathbf{0} & \mathbf{B} \\ \mathbf{C} & \mathbf{0} \end{bmatrix}, \quad (25)$$

where

$$\mathbf{B} = \begin{bmatrix} kL & \eta + kL\xi \\ k & k\xi \end{bmatrix}, \quad \mathbf{C} = \begin{bmatrix} k\xi & \eta + kL\xi \\ k & kL \end{bmatrix}. \quad (26)$$

The transfer matrix, Eq. (25), is in the form of an exact emittance exchange.

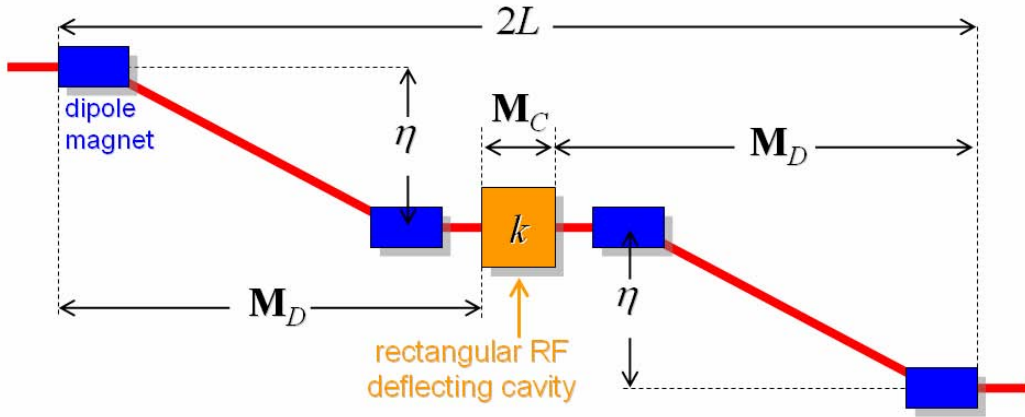


Figure 2. Schematic diagram for exact longitudinal-to-transverse emittance exchange, consisting of two identical doglegs (\mathbf{M}_D) and a transverse cavity (\mathbf{M}_C). The matrix for \mathbf{M}_D and \mathbf{M}_C are given by Eq. (19) and Eq. (20), respectively.

We introduce the 4x4 beam matrix Σ , whose elements are the second central moments of phase-space variables:

$$\Sigma_{ij} = \langle X_i X_j \rangle. \quad (27)$$

Here $\langle \dots \rangle$ represents taking the average over the ensemble of particles and $(X_1, X_2, X_3, X_4) \equiv (x, x', z, \delta)$. The 4x4 beam matrix before the exchange is

$$\Sigma_b = \begin{bmatrix} \Sigma_x & 0 \\ 0 & \Sigma_z \end{bmatrix}, \quad (28)$$

where the 2x2 submatrices are

$$\Sigma_x = \varepsilon_x \begin{bmatrix} \beta_x & 0 \\ 0 & 1/\beta_x \end{bmatrix}, \quad \Sigma_z = \varepsilon_z \begin{bmatrix} \beta_z & 0 \\ 0 & 1/\beta_z \end{bmatrix}, \quad (29)$$

and β_x and β_z are the beta functions in the x - and z -directions, respectively. After the exchange the beam matrix becomes

$$\Sigma_a = \mathbf{M}_{EX} \Sigma_b \mathbf{M}_{EX}^T = \begin{bmatrix} \mathbf{B} \Sigma_x \mathbf{B}^T & \mathbf{0} \\ \mathbf{0} & \mathbf{C} \Sigma_z \mathbf{C}^T \end{bmatrix}. \quad (30)$$

Here the superscript T denotes the transpose operation.

4. Simulation Study

A numerical optimization of a photoinjector capable of providing the needed parameters has been performed. This numerical study is for a proof-of-principle demonstration that effects not included in the previous sections do not seriously degrade the performance of the phase-space manipulation scheme. Thus the specific parameters in this section are somewhat different than described above. In particular, we have chosen here to start from an electron beam with smaller transverse emittance and less longitudinal current to keep the transverse-longitudinal aspect ratio to a level that can be handled easily.

4.1 The Injector

The electron source is a 1.5-cell radio-frequency (rf) gun operating at 2.6 GHz producing a 7.5-MeV electron bunch. The gun is surrounded by two magnetic solenoids. One provides a non-zero field on the photocathode surface, as needed for producing an angular-momentum-dominated beam, while the other solenoid allows control of the beam envelope. A downstream linear accelerator (linac) composed of eight TESLA-type superconducting cavities operating at 1.3 GHz increases the beam energy to approximately 215 MeV. The linac is followed by a round-to-flat beam converter composed of three skew quadrupole magnets that transforms the incoming angular-momentum-dominated beam into a flat, uncoupled beam.

The photoinjector was modeled with the particle-in-cell tracking programs *Astra* [23] and *Impact-T* [24]. *Astra* was used to model the cylindrically-symmetric portion of the beamline. The axial field profiles were used to model the cavities and solenoid, and the radial dependence of the longitudinal accelerating fields was taken into account up to second order in radius. A low longitudinal emittance is achievable provided nonlinearities in the longitudinal phase space are kept insignificant. To this end we assumed the photocathode was illuminated by a 3D oblate ellipsoid laser pulse [25]. Because of the quadratic dependence of the accelerating field on radial position, a small longitudinal emittance calls for a small initial beam radius on the photocathode. Such a requirement results in a small transverse emittance whose main contribution comes from the photoemission process. The thermal emittance was taken to be 0.6 μm per mm rms transverse size on the photocathode, a value consistent with an excess kinetic energy of 0.26 eV for copper cathode. Because of the short response time of the metallic-type photocathode, the photocathode drive-laser pulse duration can in principle be very short (less than 50 fs). The longitudinal emittance was minimized with the constraint of generating a short electron bunch (50 μm or less) downstream of the accelerating module. The minimization was performed with the generic optimizer *SDDSOPTIMIZE* [26]. The optimized phase space was then passed to the program *Impact-T* to simulate the round-to-flat-beam transformation, taking into account space-charge

forces. The operating parameters and achieved beam parameters are summarized in Table 1. The evolution of the beam emittance along the photoinjector beamline is shown in Fig. 3.

Table 1. Operating Parameters and Achieved Beam Parameters at the Photoinjector End

Operating Parameters	Value	Units
Bunch charge	20	pC
Laser rms spot size	300	μm
Laser rms pulse duration	80	fs
Peak E-field in rf-gun	138	MV/m
Launch phase	45	deg
Peak E-field in TESLA cavities	36	MV/m
B-field on photocathode	0.191	T
Cavity off-crest phase	4	deg
Beam Parameters	Value	Units
Before flat beam transformation		
Transverse (coupled) projected x and y emittances	4.96	μm
Intrinsic transverse x and y emittances	0.23	μm
Longitudinal emittance	0.071	μm
Kinetic energy	215.4	MeV
After round-to-flat-beam transformation		
Emittance $\gamma\epsilon_x$	9.9	μm
Emittance $\gamma\epsilon_y$	0.0054	μm
Longitudinal emittance	0.080	μm
$\chi(\epsilon_x\epsilon_y)^{1/2}$	0.23	μm

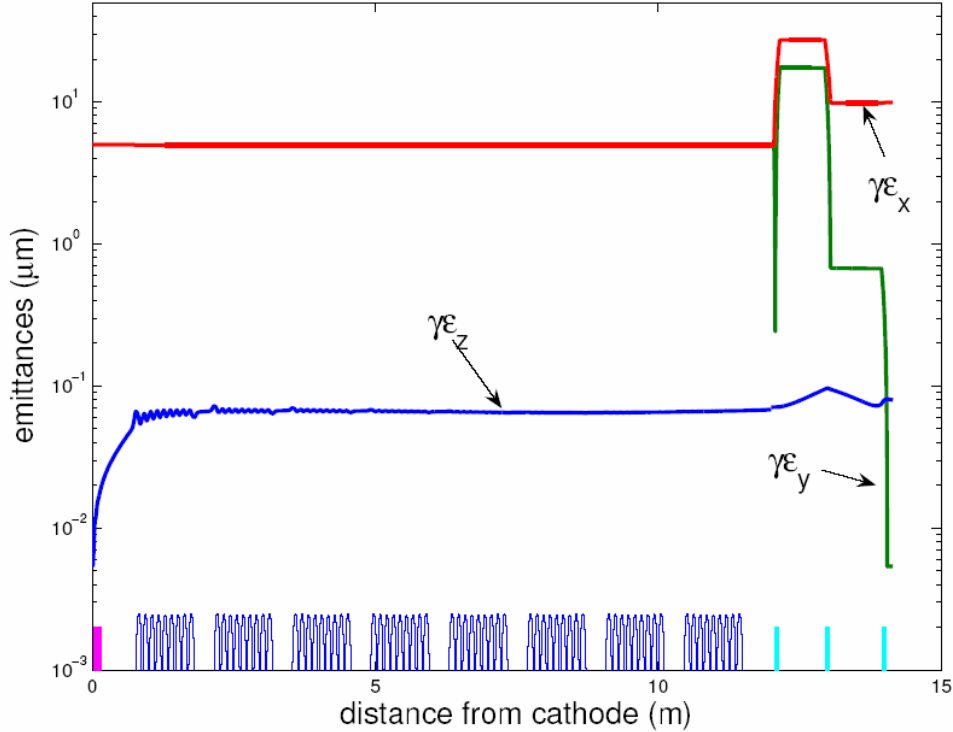


Figure 3. Evolution of the transverse horizontal (red), vertical (green), and longitudinal (blue) emittances along the photoinjector beamline. The purple and cyan boxes at the bottom indicate the locations of the rf gun and the skew quadrupoles, respectively, while the black line indicates the accelerating cavity contour.

4.2. The Emittance Exchanger

The emittance exchange was simulated using *ELEGANT* [27], including second-order optical aberrations, by tracking 2×10^5 macroparticles—taken from the output of the injector simulation—through the system shown in Fig. 2 and using the parameters listed in Table 2. Transverse and longitudinal phase-space plots are shown in Fig. 4, both before and after the emittance exchange system, without yet including the effects of coherent synchrotron radiation (CSR) in the dipole magnets. The nearly perfect emittance exchange is achieved only after minimizing both the thick-lens and second-order effects with a unique incoming energy chirp (δ - z slope) of the electron beam given by

$$h = -\frac{1}{\xi}. \quad (31)$$

Limitations introduced by a finite rf cavity length have already been described in Ref. [21], where a specific initial energy chirp is used to compensate this effect. In addition, a second-order dispersion error also arises, which was briefly described in Ref. [21]. The additional energy spread introduced by the rf cavity must pass through the two remaining bends of the exchanger system. Although the linear dispersion is fully included in the linear exchanger theory in Eq. (19), the second-order dispersion of the final two bends is not included and can introduce another

limitation. This effect can also be compensated by the same initial energy chirp introduced to compensate the thick-lens cavity. The second-order dispersion aberration is purely spatial, Δx , immediately after the last bend, and scales as $\Delta x \sim \delta^2$, where δ is the additional energy deviation caused by an off-axis particle in the cavity. As in any purely spatial aberration, the associated emittance growth can always be minimized by choosing a large beta function at that point, so that the spatial aberration becomes small in comparison to the beam size. The initial energy chirp (given by Eq. (31)) that compensates the thick-lens cavity effect also maximizes the horizontal beta function after the last bend, minimizing the second-order dispersion aberration to an insignificant level.

Table 2. Emittance Exchange Simulation Parameters

Parameter	Symbol	Value	Unit
Electron energy	E	215	MeV
Dipole magnet length	L_B	20	cm
Drift length between dipole magnets	L	1	m
Bend angle per dipole magnet	θ	20	deg
Length of rf cavity	L_c	30	cm
Initial horizontal norm. emittance	$\gamma\epsilon_{x0}$	9.9	μm
Initial longitudinal norm. emittance	$\gamma\epsilon_{z0}$	0.080	μm
Initial rms bunch length	σ_{z0}	51	μm
Initial rms slice energy spread	σ_E^G	0.9	keV
Initial energy chirp (δ - z slope)	h	6.86	m^{-1}
Initial horizontal beta function	β_{x0}	100	m
Initial horizontal alpha function	α_{x0}	0	
Final horizontal norm. emittance (including CSR estimation, see text)	$\gamma\epsilon_{xf}$	0.16	μm
Final longitudinal norm. emittance	$\gamma\epsilon_{zf}$	11	μm

To minimize the effects of CSR in the double doglegs, we have chosen a large initial bend-plane (x) beta function (100 m as shown in Table 2) at the beginning of the exchanger system by rematching the horizontal beam size from the injector simulation. Such a large beta function, together with a large horizontal emittance (9.9 μm), increases the effective rms bunch length in the system. For example, the effective rms bunch length in the first dipole is given by

$$\sigma_z(s) = \sqrt{\sigma_{z0}^2 + \frac{s^2}{\rho^2} \sigma_x^2} = \sqrt{\sigma_{z0}^2 + \frac{s^2}{\rho^2} \epsilon_{x0} \beta_{x0}}, \quad (32)$$

where σ_{z0} is the initial bunch length, and s is the distance traveled along the dipole magnet with bend radius ρ . Figure 5 shows both the bunch length and the energy spread evolution along the exchanger beamline. The effective bunch length remains much longer than the initial bunch length, except for a very short section between the end of the second dipole and the beginning of the third dipole, where the rms bunch length reaches $\sim 7 \mu\text{m}$ due to the special choice of the initial energy chirp (to suppress thick-lens and second-order effects). As a result of the larger

average bunch length in the system, and with only 20 pC of charge, the CSR-induced bend-plane emittance growth computed using the 1D CSR algorithm of *ELEGANT* is found to be modest, about a factor of 2.5. In addition, the CSR effect calculated by 1D formulae may give an overestimate of the emittance growth when the bunch is extremely short because the transverse coherence length of the radiation may be much smaller than the horizontal beam size (*i.e.*, when $(\rho\sigma_z^2)^{1/3} \ll \sigma_x$ at the end of the second dipole and the beginning of the third dipole, see Fig. 5) [28]. Since this 3D-suppression effect is not included in the 1D CSR model of *ELEGANT*, we use a factor of 2 instead of 2.5 to estimate the final horizontal emittance as shown in Table 2.

Although the large beta function helps suppress the CSR wakefield, the disadvantage is that the final rms bunch length is increased to about 500 μm after the emittance exchange (see Figs. 4 and 5). Thus the final peak current in this numerical example is only 3.4 A. The bunch needs to be further compressed by a factor of 150 to 300 in order to be useful for a short-wavelength FEL. This compression may be accomplished in multiple stages at higher beam energies and with weaker bends, in order to minimize any additional CSR effects.

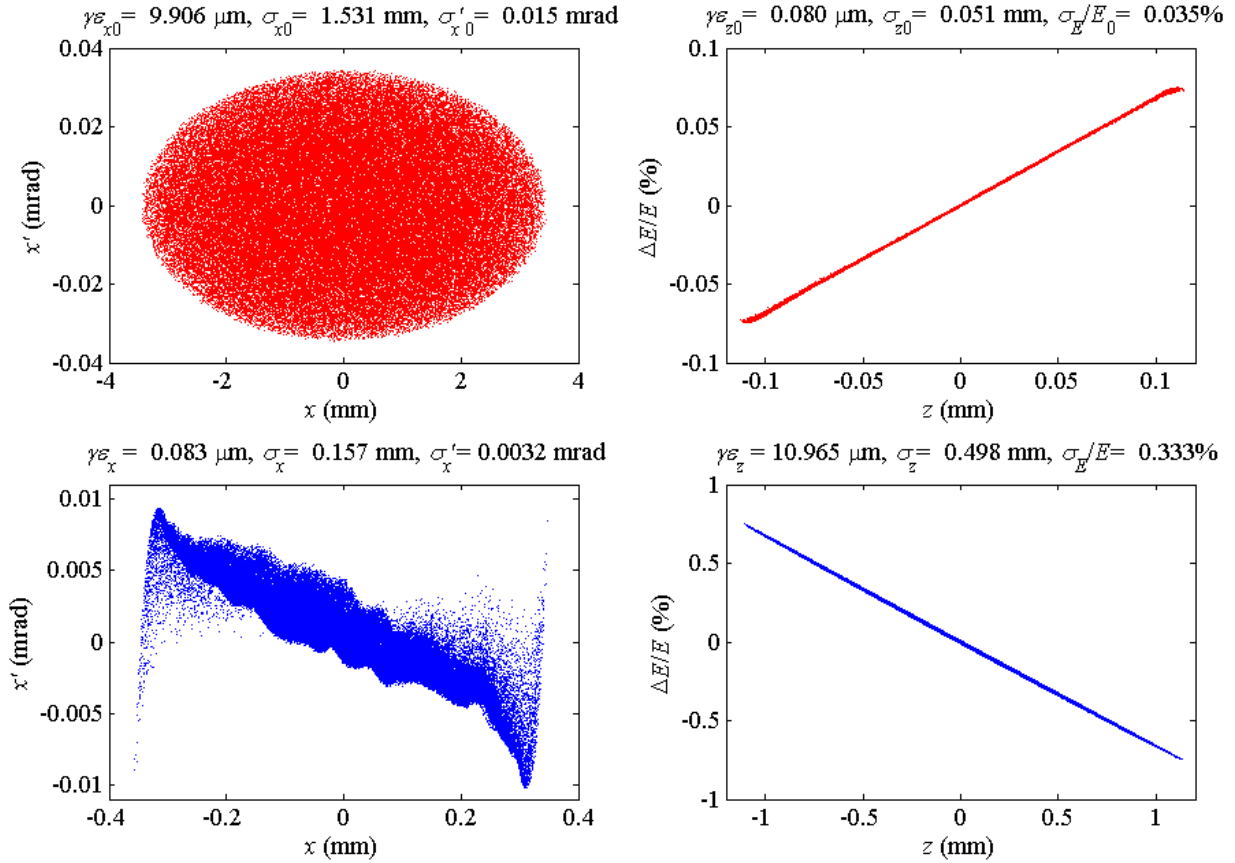


Figure 4. Transverse phase space (left two plots) and longitudinal phase space (right two plots) before (top row) and after (bottom row) the emittance exchange as simulated with *ELEGANT*, using particles from the injector simulation, but not including CSR.

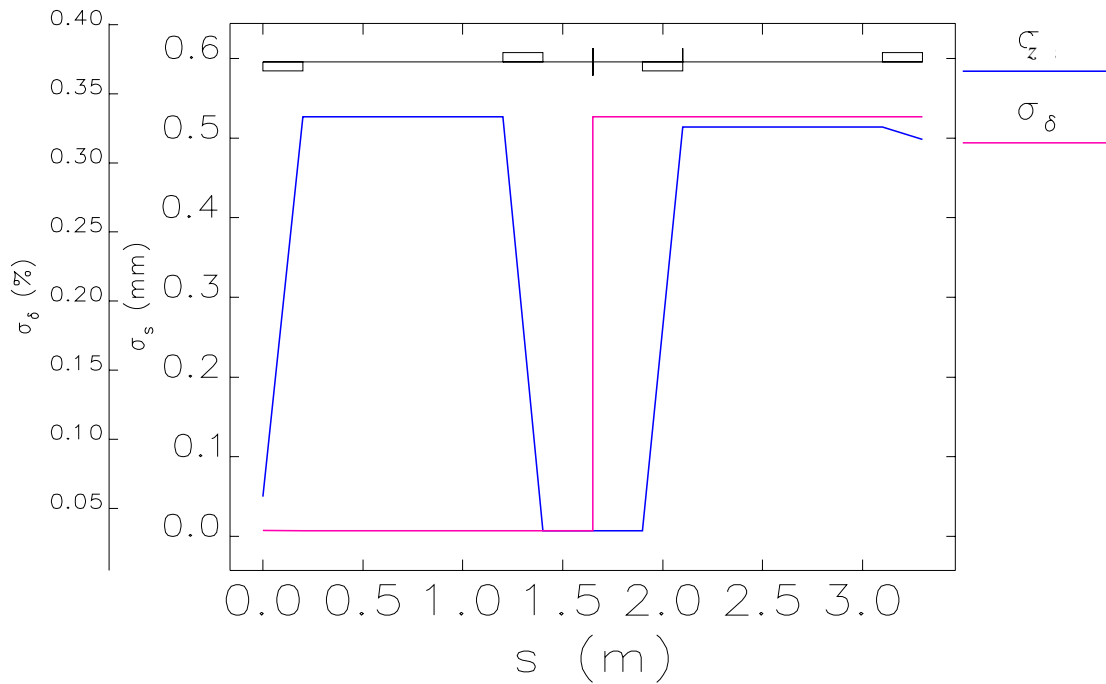


Figure 5. The rms bunch length and energy spread in the emittance exchange system where the effective bunch length is quite long during most of the transport, due to the large initial bend-plane beta function and emittance.

5. Further Remarks and Conclusions

One interesting aspect of this system is that the exchanger is a timing-jitter and an energy-jitter ‘absorber’. If the bunch arrival time changes at the entrance to the exchanger, this timing error completely disappears at the exit of the exchanger. In fact, it does not actually disappear, but simply transforms into an offset in the transverse angle—just as the emittance values are exchanged, so are the centroid variations. Although this may be an asset from the point of view of synchronization or energy stability, it may be a drawback from the point of view of the transverse stability. Even with a very small level of 1×10^{-5} relative energy jitter at the entrance to the exchanger (2 keV), the transverse amplitude jitter will become two times the rms transverse beam size. This may be a serious problem for trajectory and x-ray pointing stability in the FEL.

This jitter transfer issue is fundamental one and cannot be arbitrarily minimized. The complete longitudinal to transverse coordinate exchange, and its reverse, means that a one-sigma centroid variation in the longitudinal coordinates (time and energy) must become a one-sigma centroid variation in the transverse coordinates (position and angle). The only mitigation is to reduce the source of the jitter, or to increase the value of one-sigma of the least stable longitudinal coordinate, while preserving the longitudinal emittance. For example, reducing the initial bunch length from 50 to 25 μm and increasing the initial slice energy spread from 1 to 2 keV, will make

the system more tolerant of energy jitter by a factor of two. However, it will be less tolerant of timing jitter by the same factor. This is similar to what occurs in the final focusing doublet of a linear collider, where a very large beta function in the doublet produces a very small angular divergence. The small divergence, analogous to the small slice energy spread, makes the beam very sensitive to tiny kick angles due to quadrupole vibrations, setting very demanding tolerances on doublet mechanical stability.

In any case, these jitter issues will become always more challenging in any machine which requires smaller emittance levels, requiring technical advances in the stability of all systems which go hand-in-hand with advances in emittance.

The FEL performance typically optimizes for a round beam (with equal transverse emittances) for the same emittance product. In this proof-of-principle simulation study, our beam remains flat even after the emittance exchange due to the extremely small vertical emittance ($\gamma\epsilon_y = 0.0054 \mu\text{m}$). Although we believe further numerical optimization can yield a final round beam solution, we have not carried out these studies in this paper. Nevertheless, such a flat beam with a small horizontal emittance ($\gamma\epsilon_x = 0.16 \mu\text{m}$) and an even smaller vertical emittance is already useful for driving a Green field FEL at $\lambda_r = 0.4 \text{ \AA}$ as discussed earlier. The flat beam FEL performance was discussed by Xie in Ref. [29]. In our case, for a final compressed peak current of 1 kA and an average x/y beta function of 20 m in the undulator, the flat beam yields a power gain length of 4 m at $K=1.34$ (at electron energy 13.6 GeV), which is still a factor of 2 smaller than a round beam with both transverse normalized emittance at $0.16 \mu\text{m}$.

Finally, the technique presented in the present paper may also find application in a linear e^+/e^- collider, which requires flat beams at the collision point. The original flat-beam gun proposal [10] does not seem to meet the International Linear Collider (ILC) design goal of $(\gamma\epsilon_x, \gamma\epsilon_y) \rightarrow (8, 0.02) \mu\text{m}$ at 3.2 nC. It is conceivable to exchange the larger (than $8 \mu\text{m}$) horizontal emittance with a smaller longitudinal emittance through flat-beam generation and emittance exchange described in this paper to reach this design goal at such a high charge. Further investigations including the issues of generating spin-polarized electrons will be the subject of future work.

Acknowledgements

Work at Argonne was supported by the U.S. Department of Energy, Office of Science, Office of Basic Energy Sciences, under Contract No. W-31-109-ENG-38; at SLAC by the U.S. Department of Energy, Contract DE-AC02-76SF00515; and at NIU and Fermilab by the Northern Illinois Center for Accelerator and Detector Development (NICADD) and the University Research Association Inc under DOE Contract No. DE-AC02-76CH00300, respectively.

References

- [1] K.-J. Kim, J. Galayda, and J. Murphy, "Green Field FELs," presentation at BESAC Subcommittee on BES 20-Year Facility Road Map, Washington DC, Feb. 22-24, 2003.
- [2] Linac Coherent Light Source Conceptual Design Report, SLAC-R-593, 2002.
- [3] TESLA XFEL Technical Design Report Supplement, TESLA FEL 2002-09, 2002.

- [4] M. Hüning and H. Schlarb, Proceedings of the 2003 Particle Accelerator Conference, Portland OR, pp. 2074-2076 (2003).
- [5] Z. Huang et al., Phys. Rev. ST Accel. Beams **7**, 074401 (2004).
- [6] M. Xie, Proceedings of the 1995 Particle Accelerator Conference, Dallas, TX, pp. 183-185 (1996).
- [7] K.-J. Kim, Nucl. Instrum. Methods A **275**, 201 (1989).
- [8] B.E. Carlsten, Nucl. Instrum. Methods A **250**, 313 (1989).
- [9] Ya Derbenev, University of Michigan Report No. UM-HE-98-04 (1998).
- [10] R. Brinkmann, Ya. Derbenev, and K. Floettmann, Phys. Rev. ST Accel. Beams **4**, 053501 (2001).
- [11] A. Burov, V. Danilov, Fermilab-TM-2043 (1998).
- [12] E. Courant, in *Perspectives in Modern Physics, Essays in Honor of Hans A. Bethe*, pp. 257-260, R.E. Marshak, Ed., Interscience Publishers, (1966).
- [13] A. Burov, S. Nagaitsev, and Ya Derbenev, Phys. Rev. E **66**, 016503 (2002).
- [14] K.-J. Kim, Phys. Rev. ST Accel. Beams **6**, 1042002 (2003).
- [15] NICADD is an acronym for Northern Illinois Center for Accelerator and Detector Development.
- [16] D. Edwards et al., Proceedings of the XX International Linac Conference, Monterey, CA, pp. 122-124 (2000).
- [17] D. Edwards et al., Proceedings of the 2001 Particle Accelerator Conference, Chicago, IL, pp. 73-75 (IEEE, Piscataway, NJ, 2001).
- [18] E. Thrane et al., Proceedings of the XXI International Linac Conference, Gyeongju, Korea., pp. 308-310 (2002).
- [19] Y.-E Sun et al., Phys. Rev. ST Accel. Beams **7**, 123501 (2004).
- [20] Ph. Piot, Y.-E Sun, and K.-J. Kim, Phys. Rev. ST Accel. Beams **9**, 031001 (2006).
- [21] M. Cornacchia and P. Emma, Phys. Rev. ST Accel. Beams **5**, 084001 (2002).
- [22] K.-J. Kim and A. Sessler, Proceedings of International Workshop on Beam Cooling and Related Topics, Galena, IL, USA, AIP Conf. Proc. **821**, pp. 115-138, (2006).
- [23] Astra user manual available at http://www.desy.de/~mpyflo/Astra_Dokumentation
- [24] J. Qiang et al., Proceedings of the 2005 Particle Accelerator Conference, Knoxville TN, pp. 3316-3318 (2005).
- [25] O. J. Luiten et al., Phys. Rev. Lett. **93**, 094802 (2004)
- [26] H. Shang et al., Proceedings of the 2003 Particle Accelerator Conference, Portland OR, pp. 3470-3472 (2003).
- [27] M. Borland, ANL Advanced Photon Source Report No. LS-287 (2000).
- [28] G. Stupakov, presented at *The CSR Workshop*, Zeuthen, Germany, 2002.
- [29] M. Xie, Nucl. Instrum. Methods A **507**, 450 (2003).