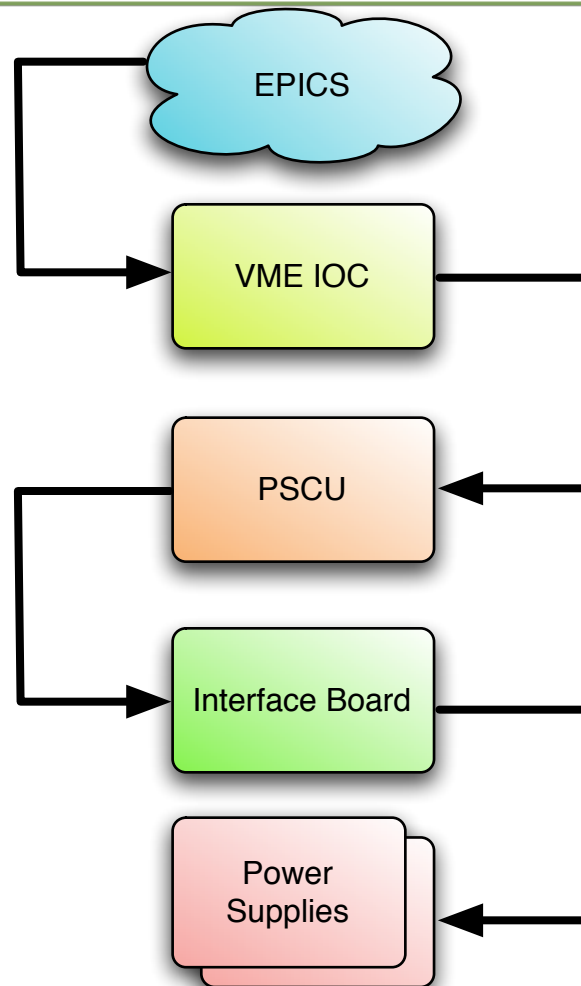


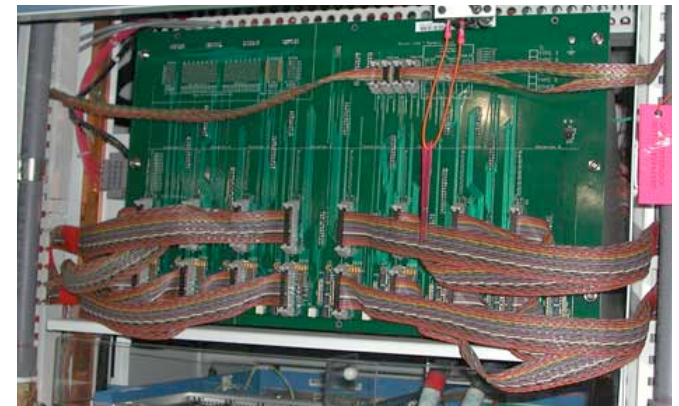
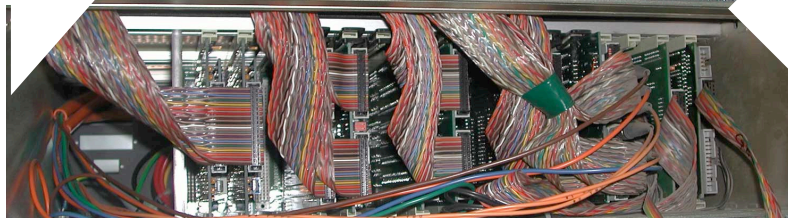
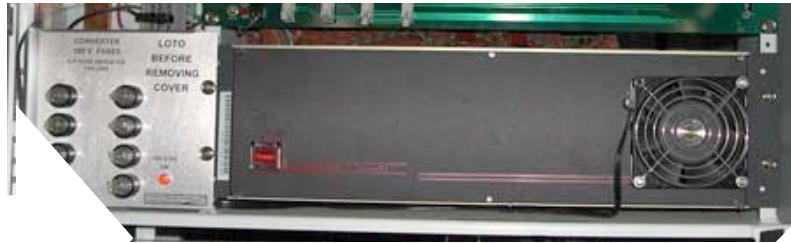
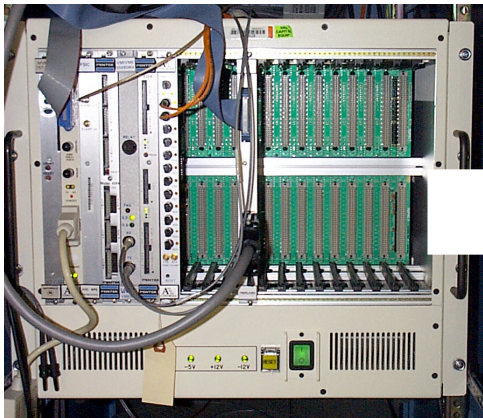
---

# Power Supply Controller

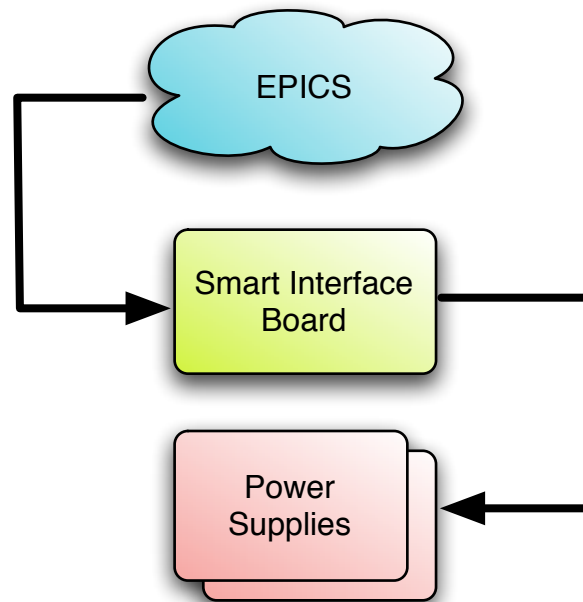
# Old Design



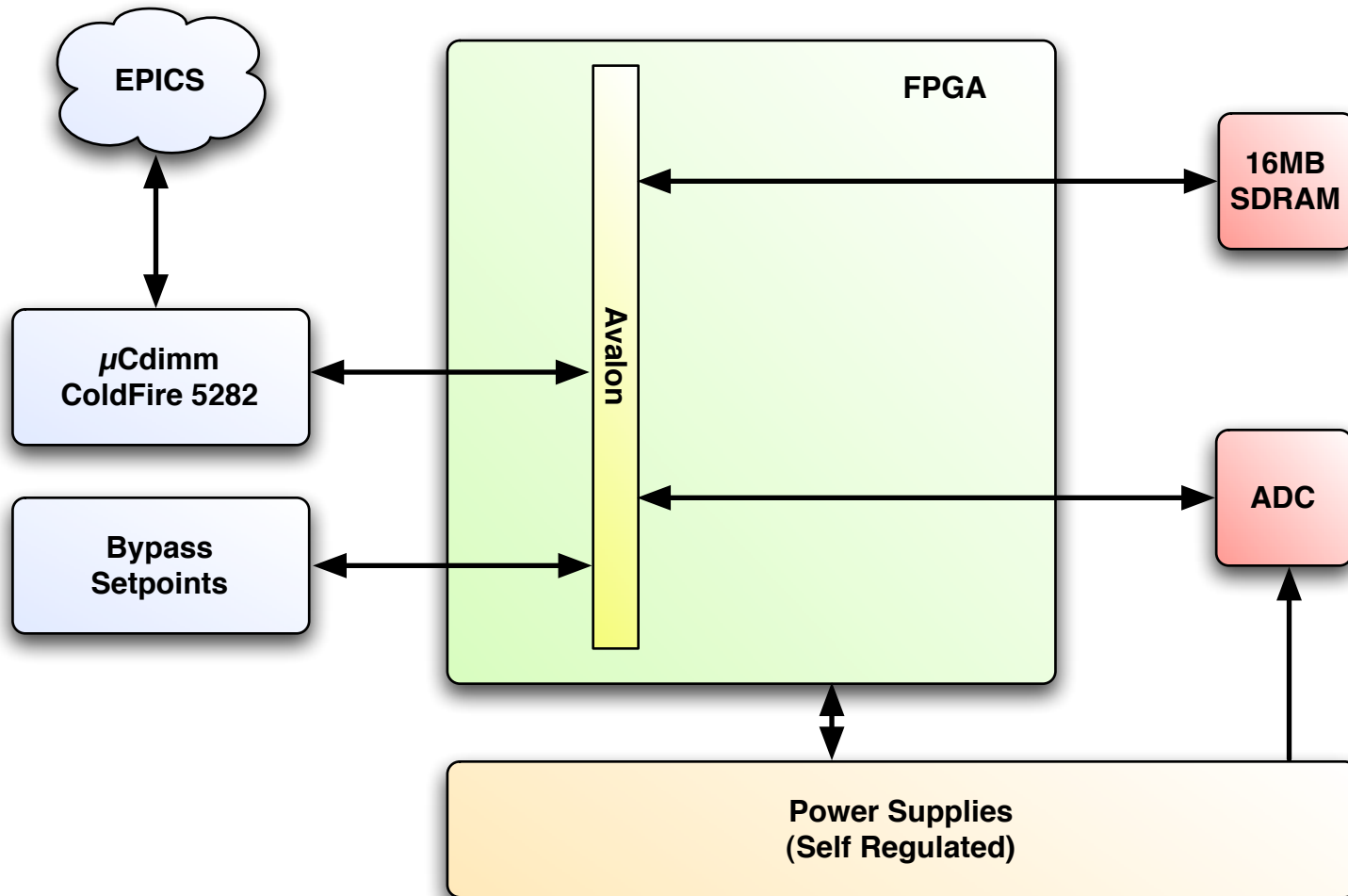
# Old Design



# New Design



# New Design



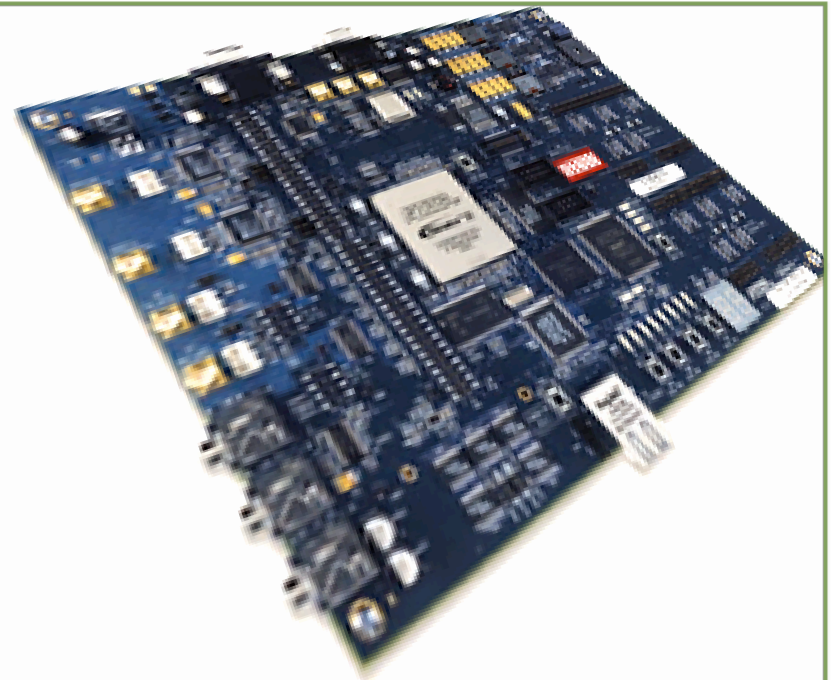
# Embedded Micro



- ▶ RTEMS
- ▶ EPICS
- ▶ Serial and Ethernet
- ▶ Serial Peripheral Interface
- ▶ I2C
- ▶ ADC

# FPGA

- ▶ Altera
  - ▶ Stratix II
  - ▶ Cyclone II
- ▶ SOPC Builder in Quartus II
- ▶ Powerful!
  - ▶ 50x 100th order bandpass filters calculated in one microsecond



# Micro/FPGA IOC

- ▶ Communication
  - ▶ EPICS/RTEMS support
  - ▶ Micro talks to FPGA via memory mapped IO
  - ▶ FPGA talks to Micro via Avalon Bus
- ▶ SOPC builder for drag and drop placement of modules
- ▶ FPGA has hundreds of pins for IO



# EPICS/Micro Demo

- ▶ “Buttons and lights” demo with EPICS/ColdFire IOC

