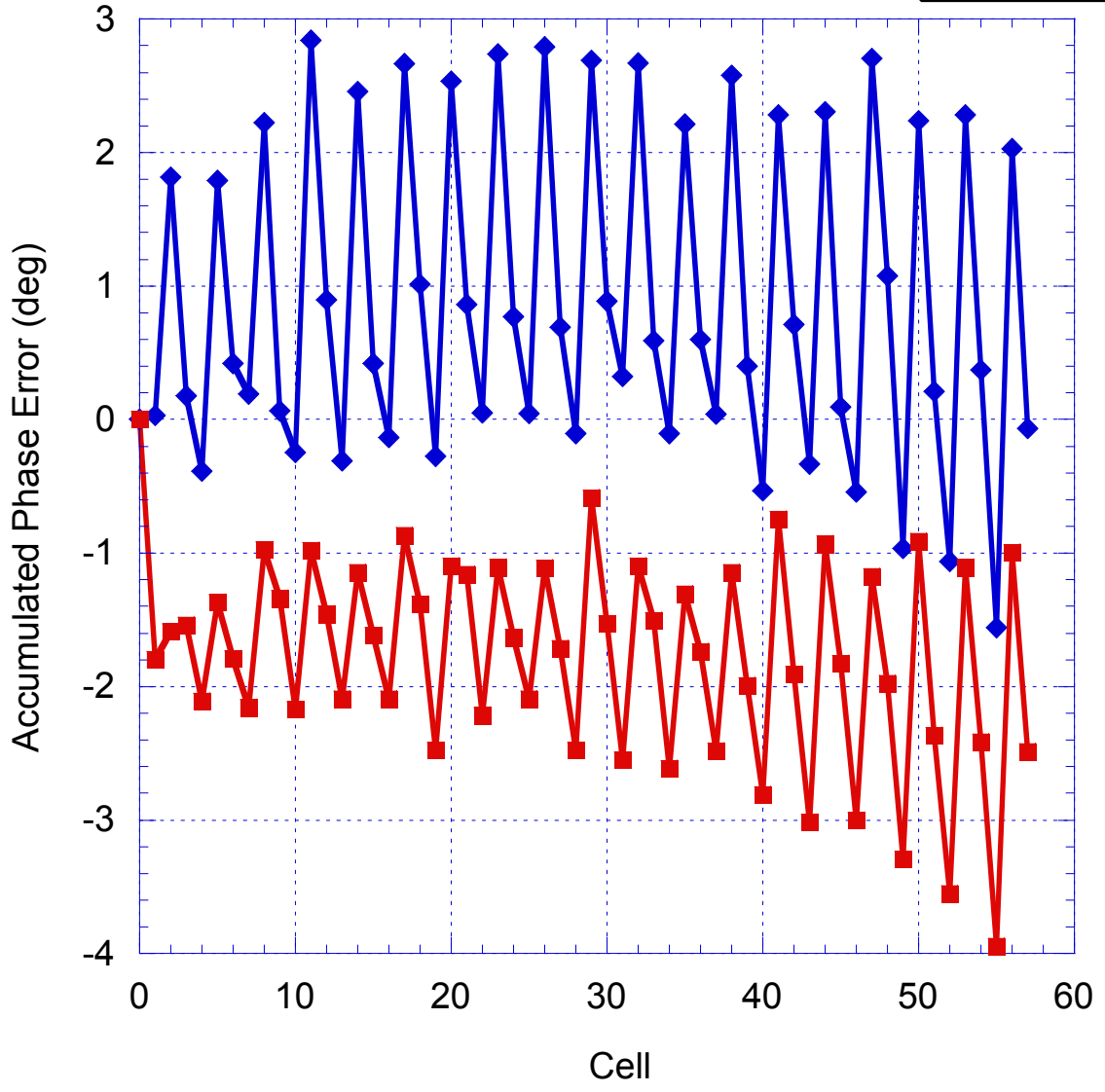
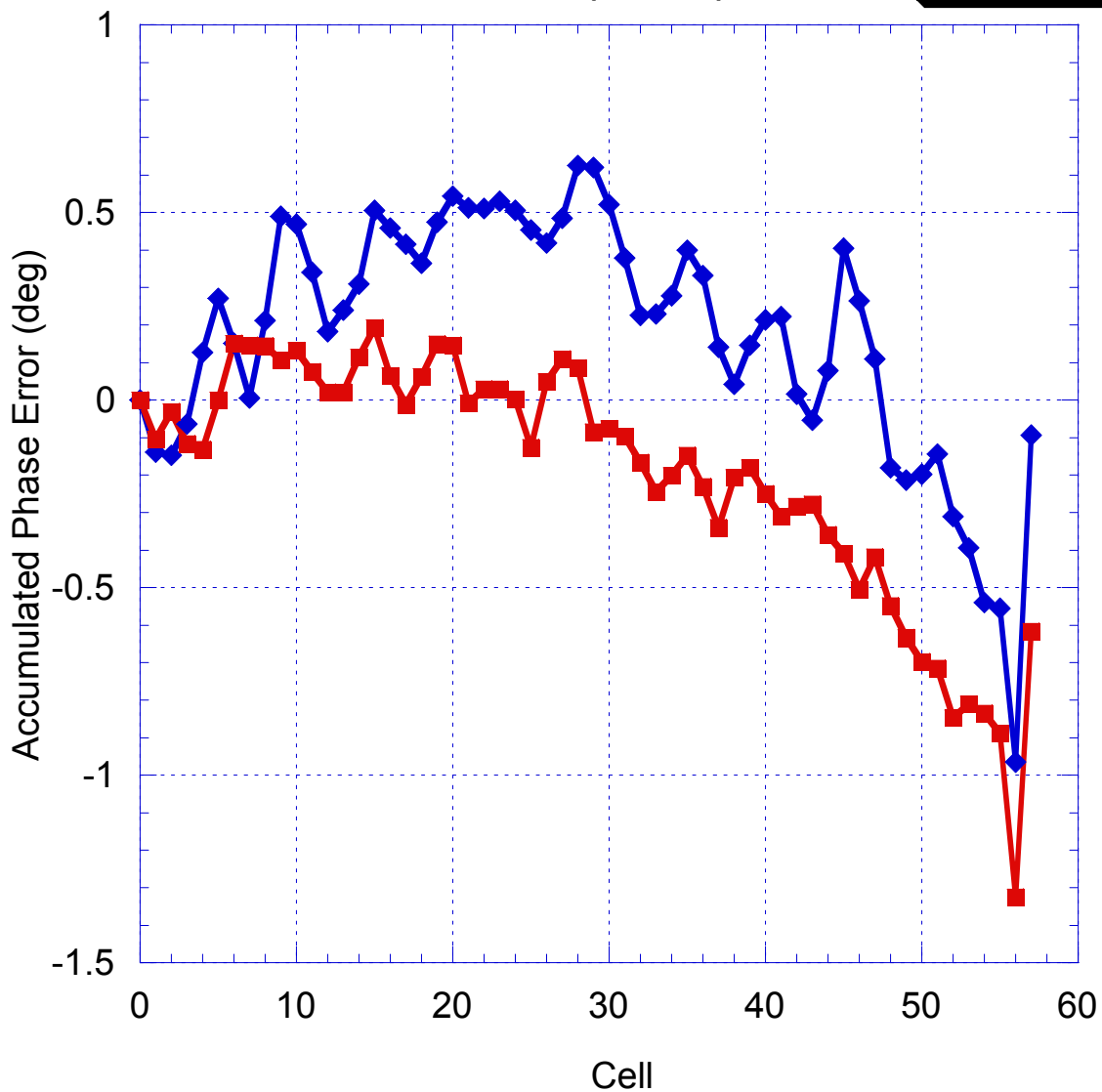


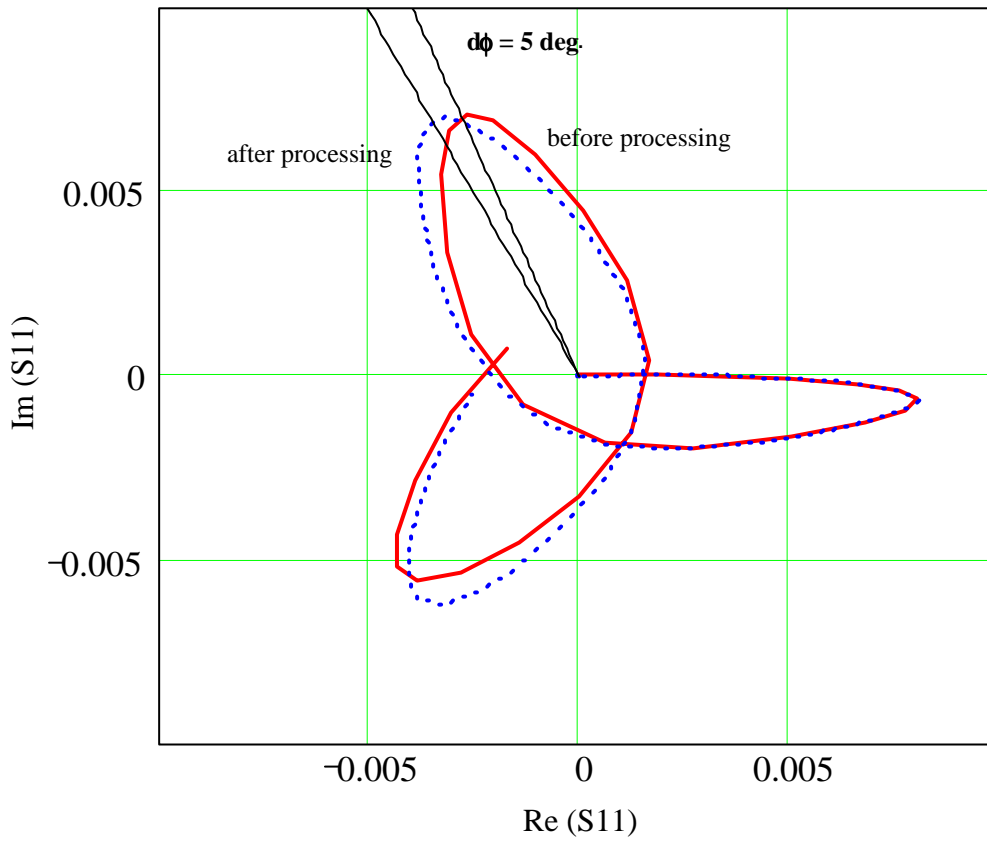
T53VG3 before & after beadpull
NO AVERAGING



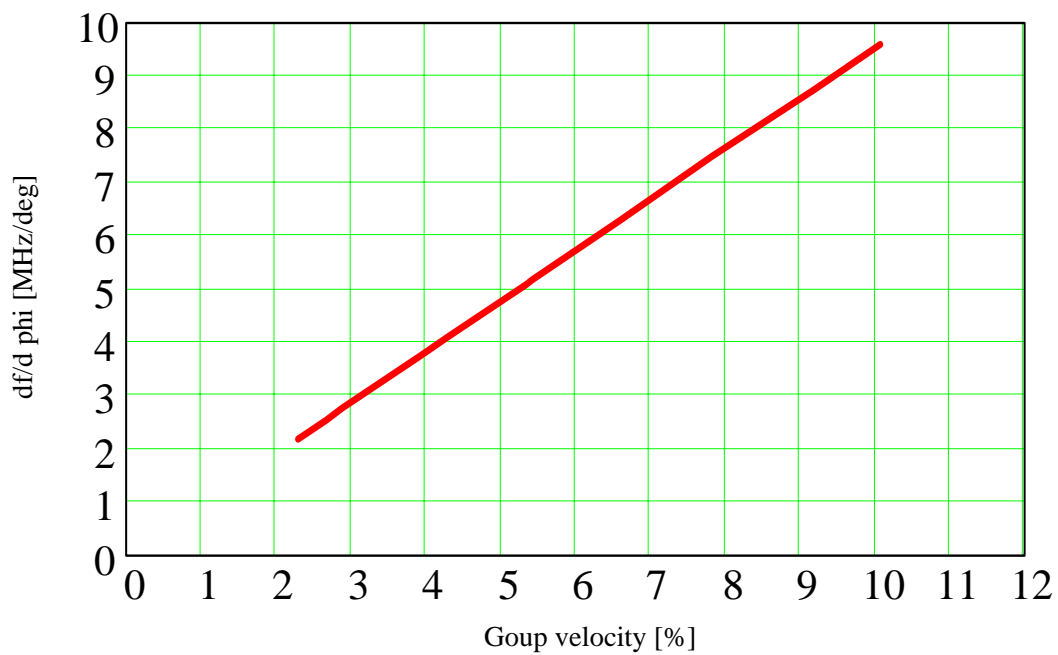
T53VG3 before & after beadpull
AVERAGED $(n+3 - n)/3$



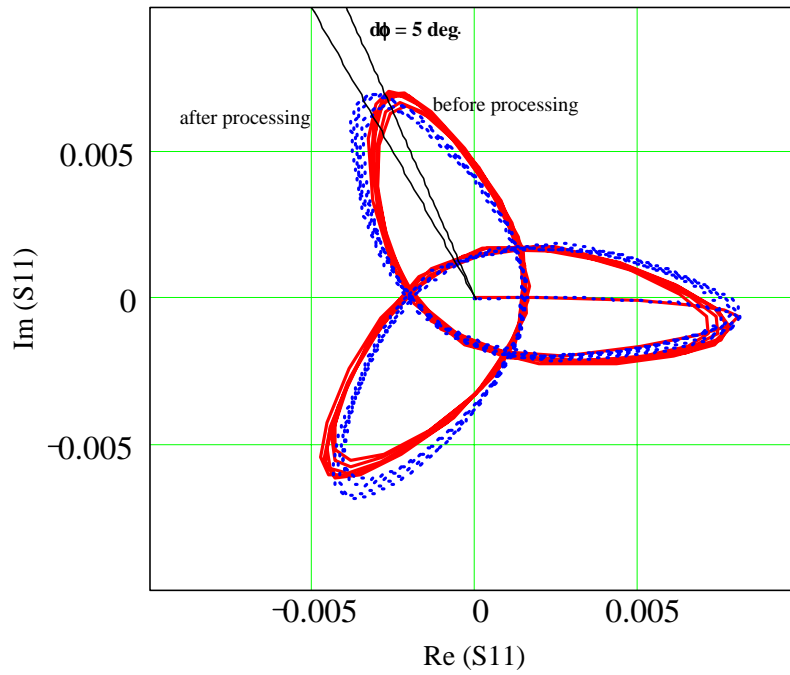
Beadpull data for T53VG3 before and after processing
Input coupler and first two cells (Valery D.)



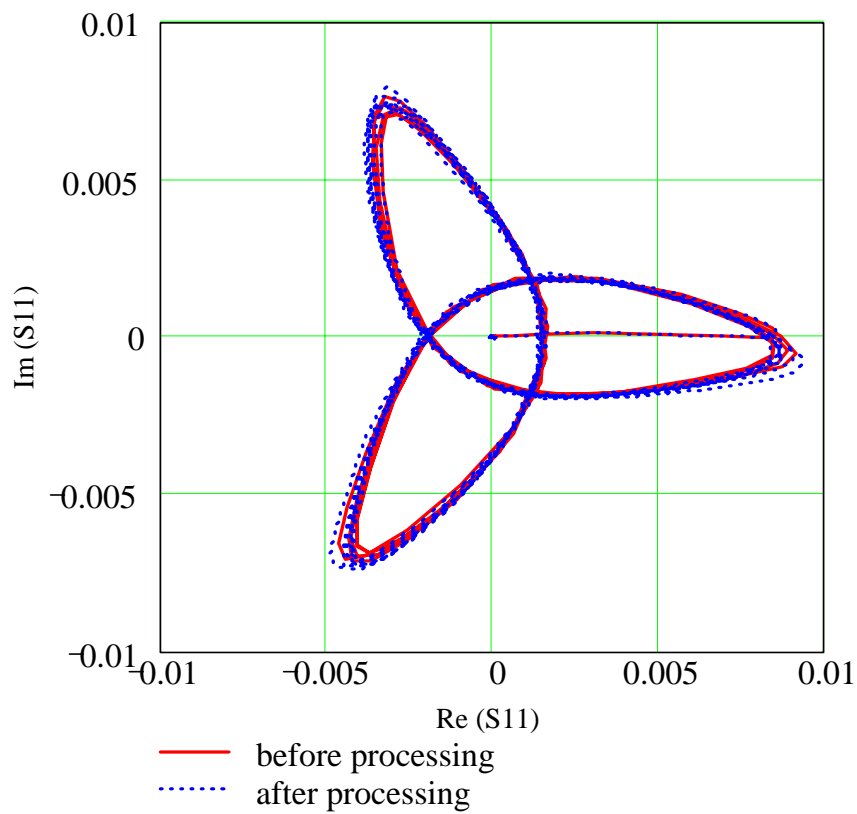
Shift of frequency per one degree phase for 11.4 GHz periodical structures vs.
group velocity



Beadpull data for T53VG3 before and after processing
Input coupler and first 12 cells



Beadpull data for T53VG3 before and after processing
Output coupler and last 12 cells



Beadpull data for T53VG3 before and after processing, raw data
Input coupler and first 12 cells

