

MECH/SHOP/ONLY

MEMORANDUM

DATE: APRIL 12 2007
FROM: BILL CHOATE
TO: MECHANICS, HV ELECTRICIAN, INSTRUMENT TECHS
SUBJECT: SECTOR 20 LCLS SYSTEMS BASIC OPERATION

The following are brief instructions on how to restart the pumps for the LCLS water systems at sector 20. Complete O&M manuals, drawings and software are still being assembled by LCLS.

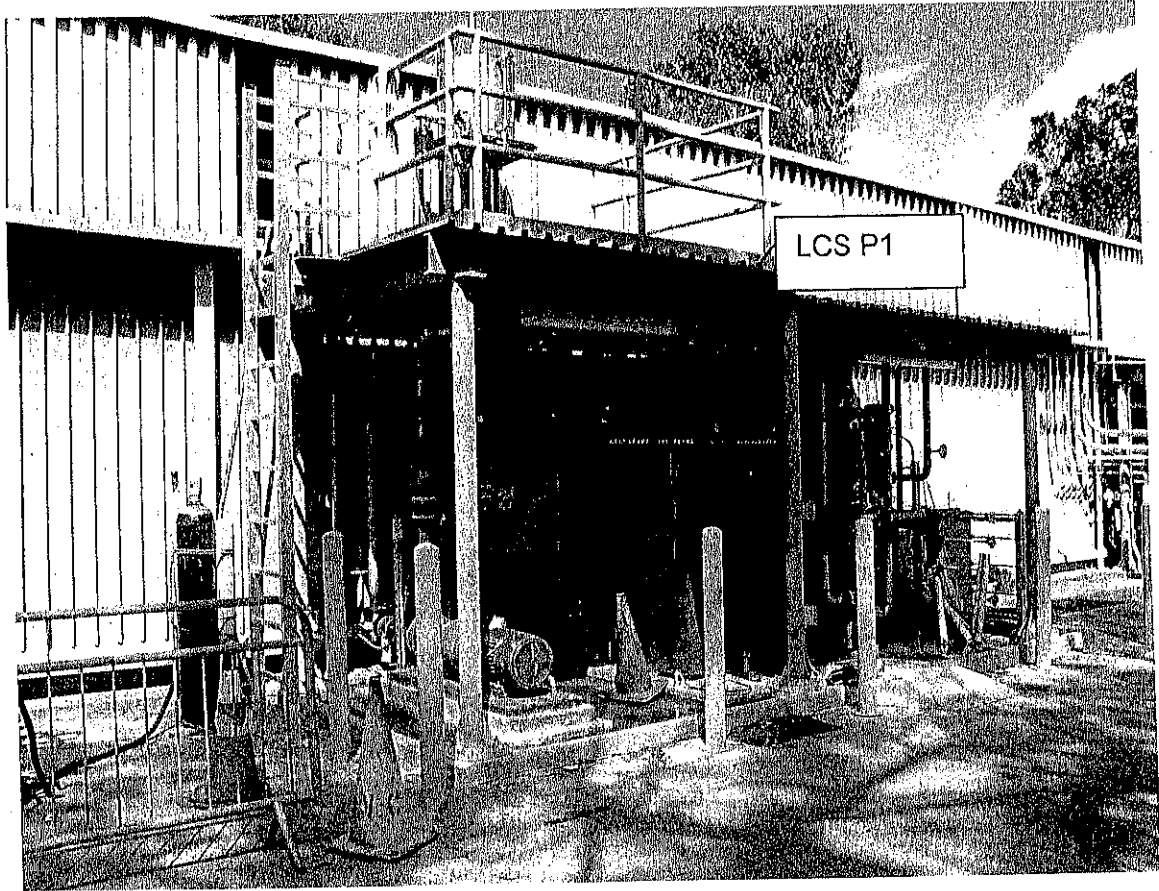
At this time, there are no alarms or displays for the LCLS pump pads on the DCS. If a pump trips or if there is a water problem for one of the system, MCC may call and ask for assistance. The following are guidelines on dealing with any problems:

1. Go to the LCLS LCS pad, which is the east pump pad on the south side of the klystron gallery at Sector 20.
2. Inspect the VFD control panels for the pumps at both the ICS and LCS pads. If a fault light is on, inspect the system to determine the problem. If no problem can be detected, press the reset button.
3. Activate the touch screen display by touching the corner of the screen. The display will go blank if it has been inactive for more than ten minutes, but touching the screen will reactivate it.
4. Inspect the pump pad screens. If a pump has faulted, go to the alarm reset screen, reset the alarms and start the pump.
5. If you cannot restore the system to operation inform MCC and call Bill Choate.

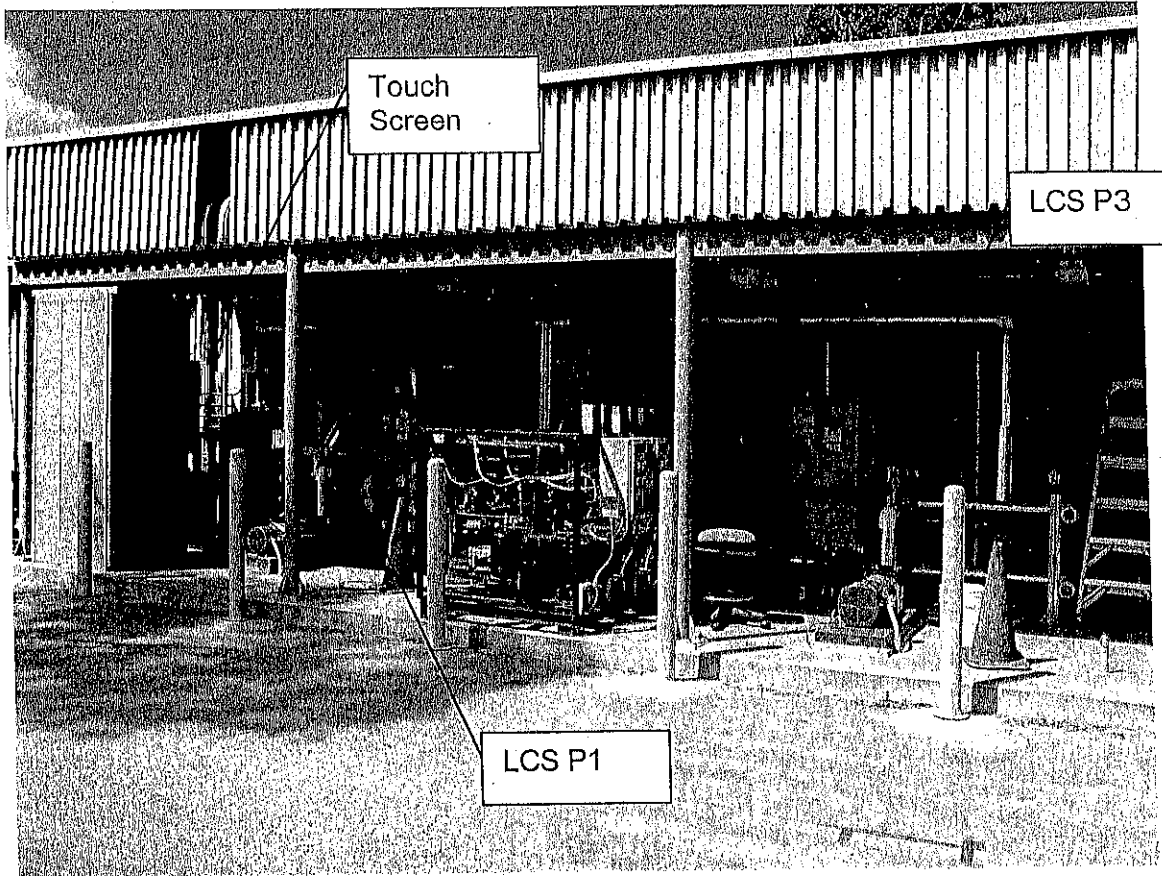
Pictures of the system and this memo are located at
P:\SEM\Operations\Operations Photos\LCLS\S20



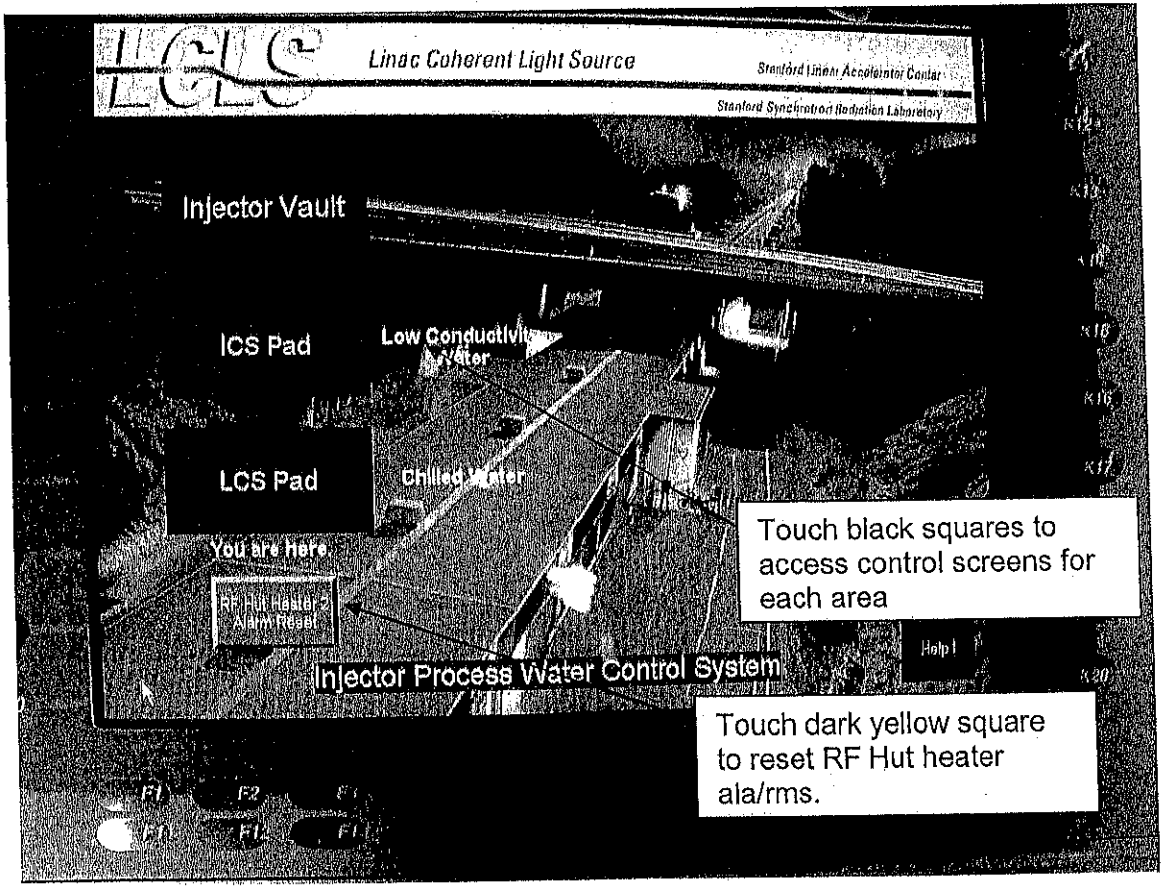
LCLS Pump Pads
South Side of Klystron Gallery
Looking East



ICS Pump Pad



LCS Pump Pad

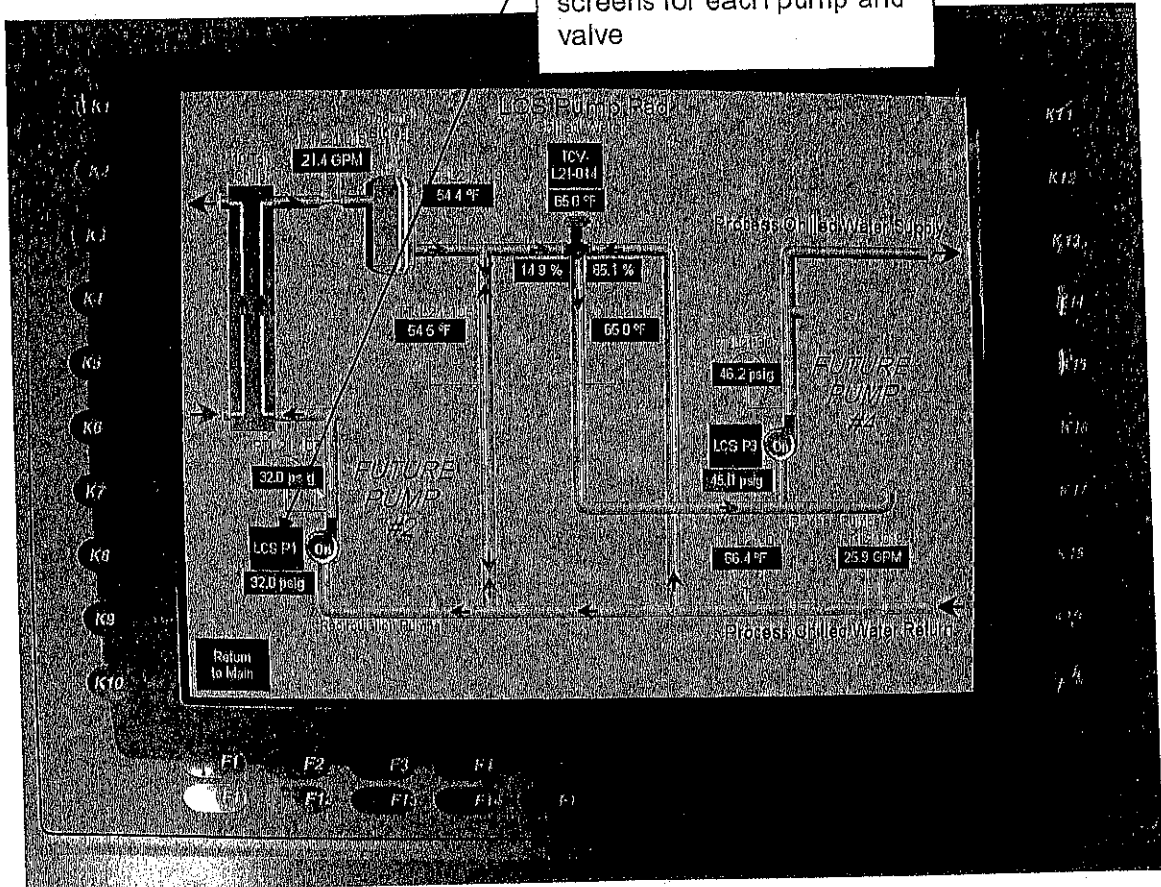


Touch black squares to access control screens for each area

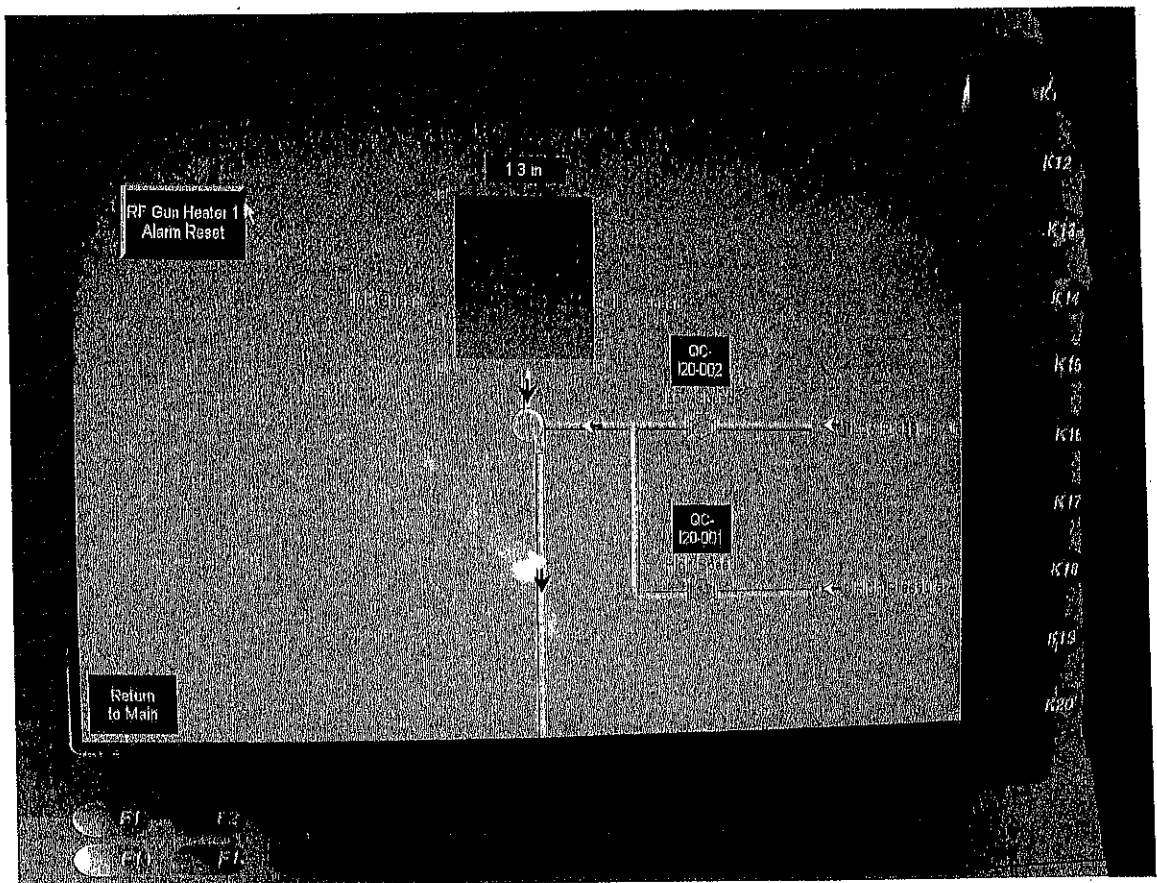
Touch dark yellow square to reset RF Hut heater alarms.

Touch Screen Main Display
 Touch Screen is located at LCS pad

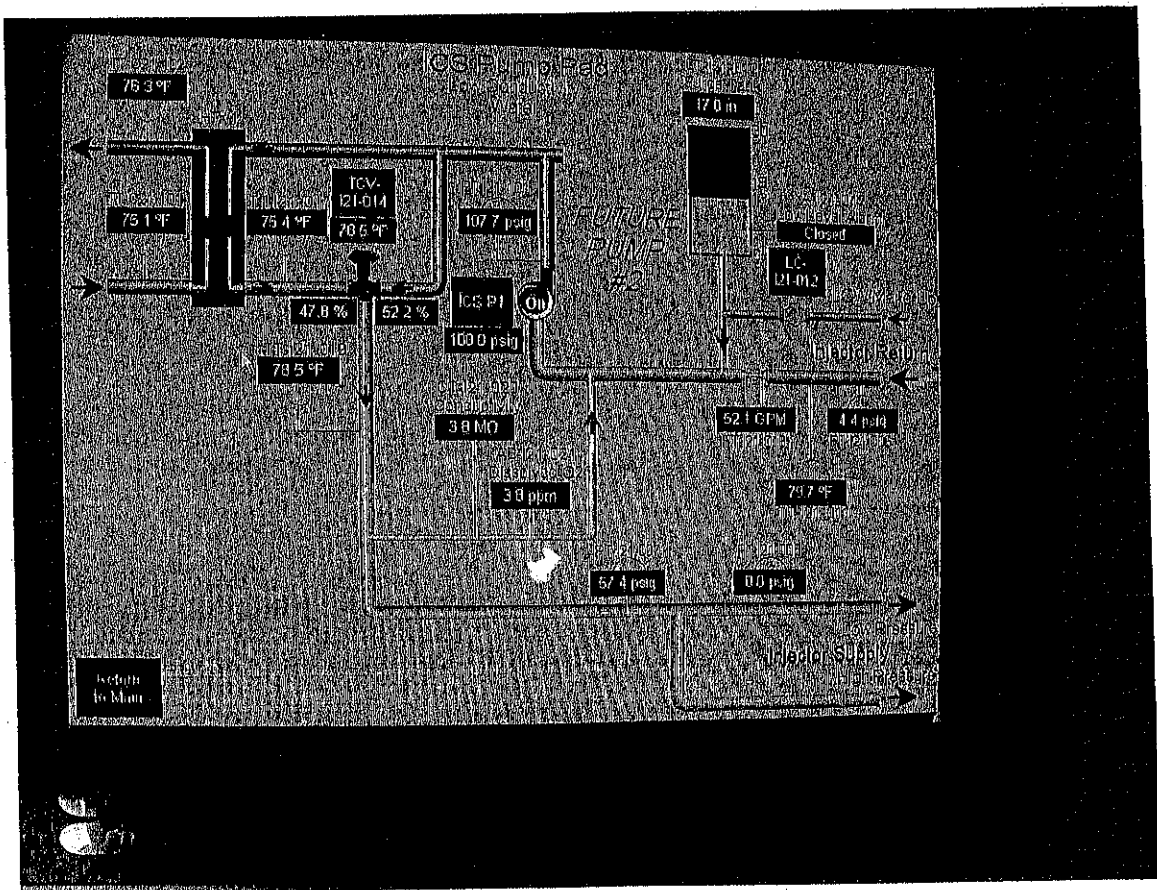
Touch black squares to access control/alarm screens for each pump and valve



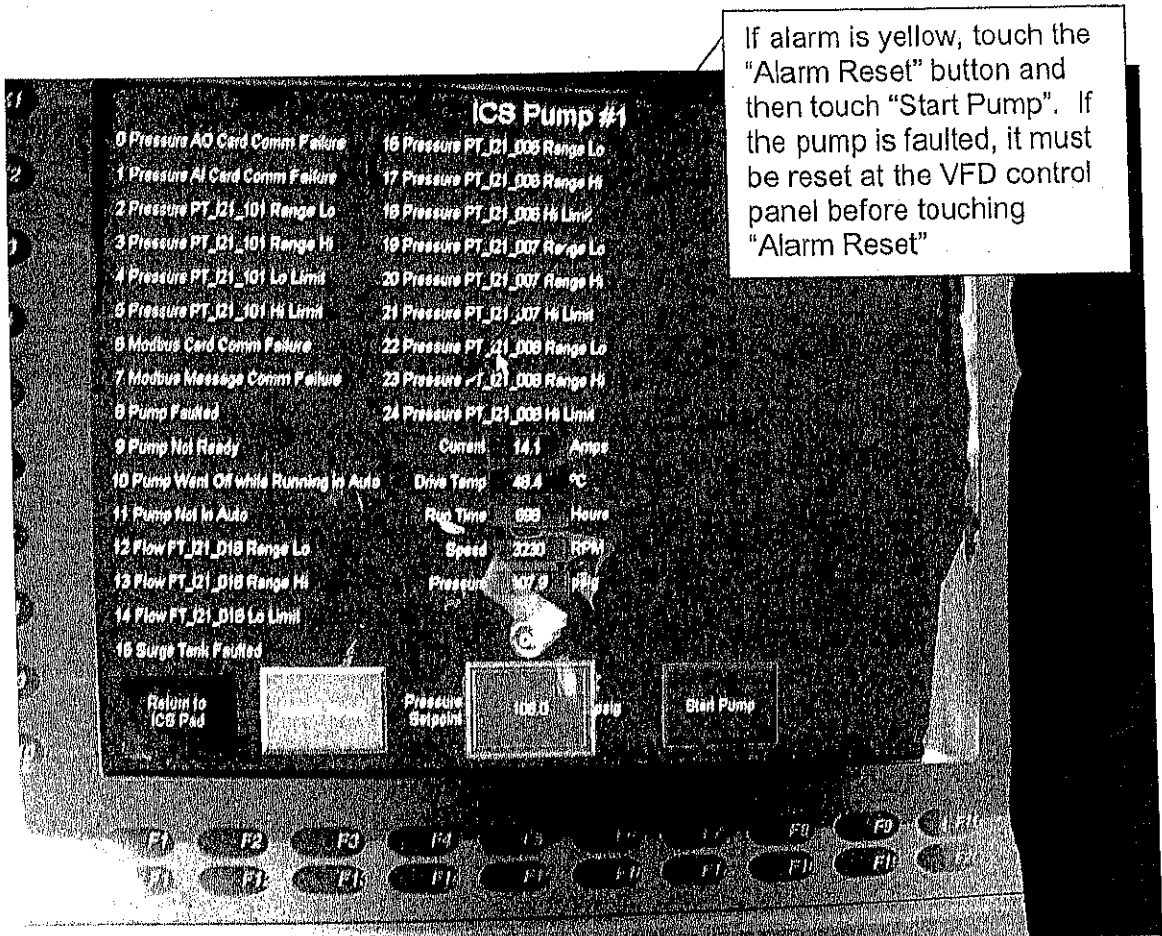
LCS Display



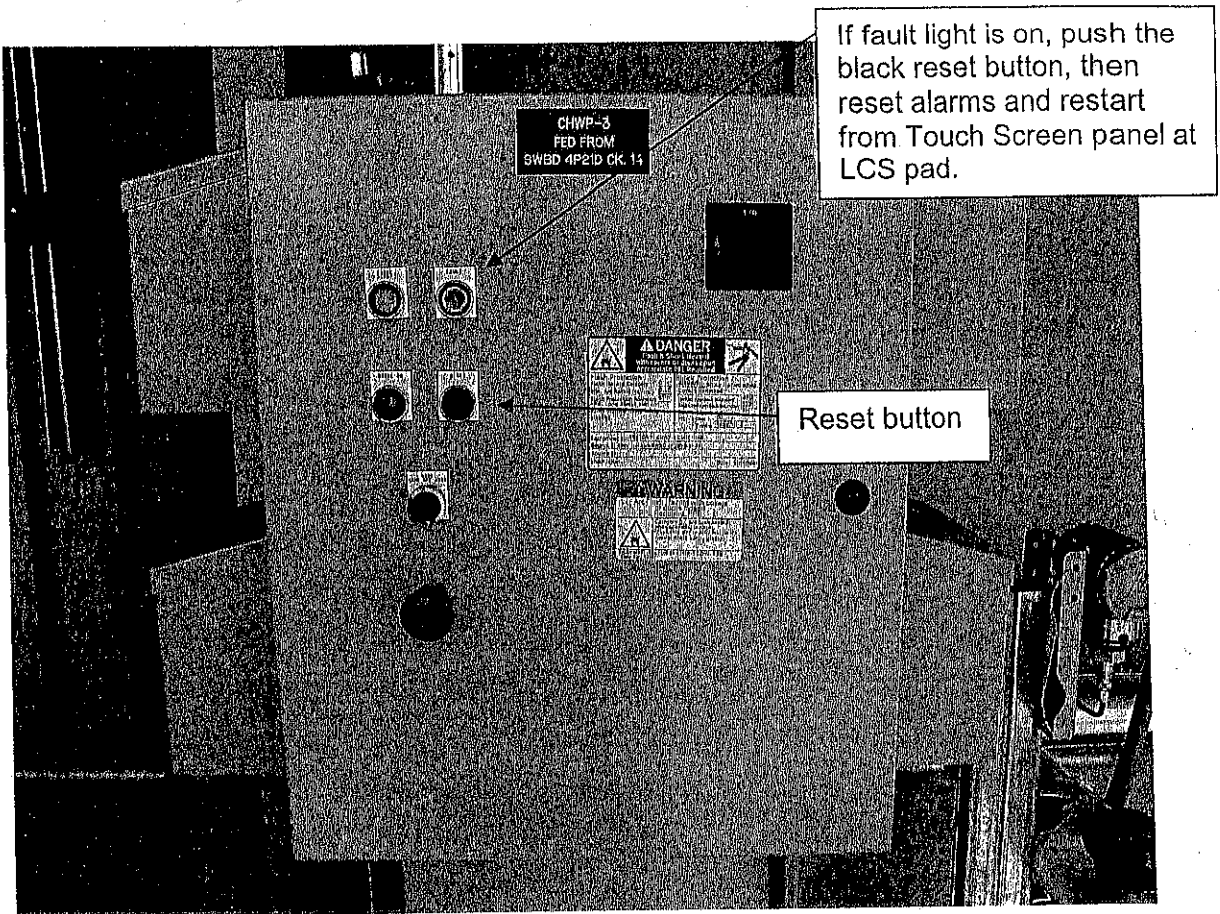
Injector Vault Display



ICS Panel Display



ICS Pump 1
 Control/Alarm Page
 (LCS Pump control/alarm pages are similar)



LCS Pump 3
(Other Pump Control Panels are similar)