

A UNIQUE POWER SUPPLY FOR THE PEP-II KLYSTRON AT SLAC

R. Cassel & M. N. Nguyen[†], Stanford Linear Accelerator Center

Abstract

Each of the eight 1.2 MW RF klystrons for the PEP-II storage rings require a 2.5 MVA DC power supply of 83 Kv at 23 amps. The design for the supply was based on three factors: low cost, small size to fit existing substation pads, and good protection against damage to the klystron including klystron gun arcs. The supply uses a 12-pulse 12.5 KV primary thyristor "star point controller" with primary filter inductor to provide rapid voltage control, good voltage regulation, and fast turn off during klystron tube faults. The supply also uses a unique secondary rectifier, filter capacitor configuration to minimize the energy available under a klystron fault. The voltage control is from 0-90 KV with a regulation of <0.1% and voltage ripple of < 1% P-P, (< 0.2% RMS.) above 60 KV. The supply utilizes a thyristor crowbar, which under a klystron tube arc limits the energy in the klystron arc to < 5 joules. If the thyristor crowbar is disabled the energy supplied is < 40 joules into the arc. The size of the supply was reduced small enough to fit the existing PEP transformer yard pads. The cost of the power supply was < \$140 per KVA.

1.0 Design considerations

The SLAC PEP-II storage rings require eight 1.2 MW RF klystrons powered by eight 2.5 MVA DC power supply at 83 Kv, 23 amps. The design considerations besides low cost were: 1) Small size so as to fit on existing PEP transformer pads. 2) Good protection against damage to the klystron from RF and klystron gun arcs. 3) Rapid Voltage adjustment to accommodate changes in beam loading and rapid conditioning of the cavities. 4) Good voltage regulation for stability with the stored beam. In addition, the power supply was designed to accommodate a Depressed Collector Klystron if it were to be developed for power efficiency reasons.

1.2 Configuration Selection

The supply configuration chosen was the use of a Primary SCR controlled rectifier operating at 12.5kv the existing site wide distribution voltage. This choice

reduces the size of the Power supply over more conventional VVT adjusted power supplies as well as provides for fast voltage adjustment and fault protection. The SCR's were configured in the so-called star point controller configuration with the filter inductor in the primary. A configuration commonly used in Europe in fusion research [1]. This configuration is ideally suited for an inductive capacitor filtered supply where bypassing of the stored energy in the filter inductor is important. The rectifier configuration is a unique arrangement which prevents/reduces the dumping of the stored energy in the filter capacitor into the klystron under a klystron arc (Figure 1).

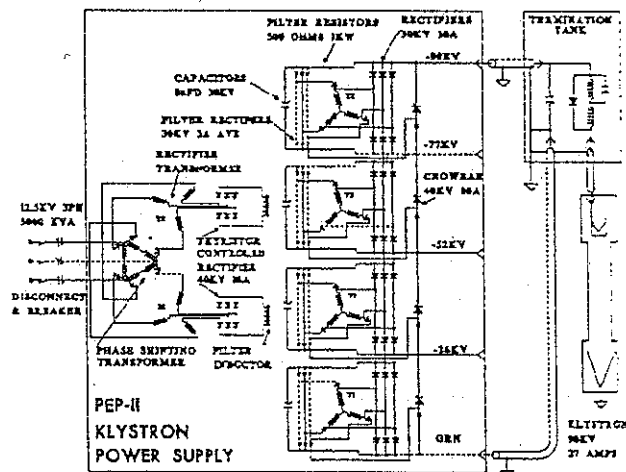


Figure 1 Power supply schematic

The primary 12.5Kv enters without a Manual Load breaker disconnect used for Safety lock and tag disconnection for maintenance. The supply is energized by way of a full fault rated Vacuum breaker used as a contactor. The breaker has independent overcurrent relaying and transformer sudden pressure lockout in case of a transformer or SCR fault. To reduce the amount of power line harmonics to meet the industrial standards a 12-pulse configuration was chosen. To accomplish the 12-phase operation with a Wye connected primary controller a phase shifting transformer is used. The use of a delta with extension windings to produce the $\pm 15^\circ$ was selected because the phase shifted output voltages are only 4% larger than the incoming line voltages. The nominal size of the phase shifting transformer is less

[†] *Work supported by DOE, contract DE-AC03-76SF0051

than 15% of the full load MVA. The rectifier transformers consist of two, open Wye primary dual Wye secondaries, transformers used to step up the voltage. The SCR controller is connected to the open Wye, with the filter inductor on the primary side. The secondary windings are taped with main power rectifier connected in a full wave bridge configuration to the full current rated taps. The 5% voltage extension is used by the filtering rectifier which is a low current full wave bridge configuration. The filter rectifiers is loaded by the filter capacitor, which is coupled to the output load by way of high ohmage resistors which limits the current in the filter rectifier to approximately 1 amp maximum. This is enough current to bleed off the voltage on the filter capacitor to allow for complete voltage filtering of the supply at 60Kv output voltage.

Figures 2 & Figure 3 show the output voltage, filter inductor ripple voltage, and the secondary transformers line to line voltage waveforms.

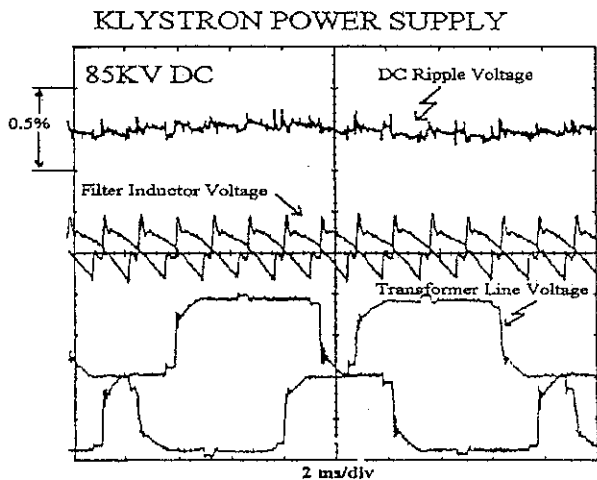


Figure 2 Output ripple 85Kv

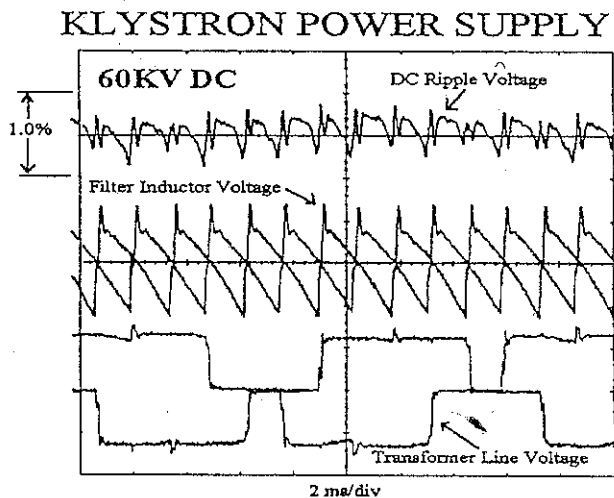


Figure 3 Output ripple at 60Kv

The output voltage ripple is greater at 60kv due to the larger ripple voltage across the filter inductor caused by phasing back the SCR's. The ripple voltage is still less

than the specifications of 1% Peak to Peak voltage ripple.

A SCR Crowbar is connected across the output rectifier to crowbar the supply in the event of a klystron arc.

1.3 Klystron arc protection

Protection of the klystron tube under a klystron arc is of extremely important. The klystron is very expensive and will probably arc at some time. To protect the klystron under arc condition the joules delivered by the power supply should not exceed 60 Joules or an I^2t of 40 amp²seconds [2]. In conventional supplies this is accomplished by use of fast crowbar and a series resistor. The series resistor is typically 10-50 ohms which results in vary large power losses at high voltages. If the crowbar fails in anyway the klystron would be destroyed because of the large amount of energy involved.

With the new design although there is a slower SCR crowbar, failure of the crowbar or any other single point failure will not result in the destruction of the klystron. The main stored energy from the capacitor back is isolated by use of the filter capacitor and isolating resistors which in the event of a crowbar failure results in only 50 amps for 4 milliseconds and a I^2t of <15 amp²seconds with less than 40 Joules in a arc to the klystron. The Primary star point control with filter inductor allows for the bypass of the filter inductors energy under klystron fault conditions by turn on both SCR's in one phase and turning off all the other SCR's. The result is the isolating of the load from the power line and the discharge of the energy in the filter inductor into its resistance. The result of an arc is seen in figure 4 on the klystron and figure 5 on the primary line current.

KLYSTRON ARC VOLTAGE/CURRENT

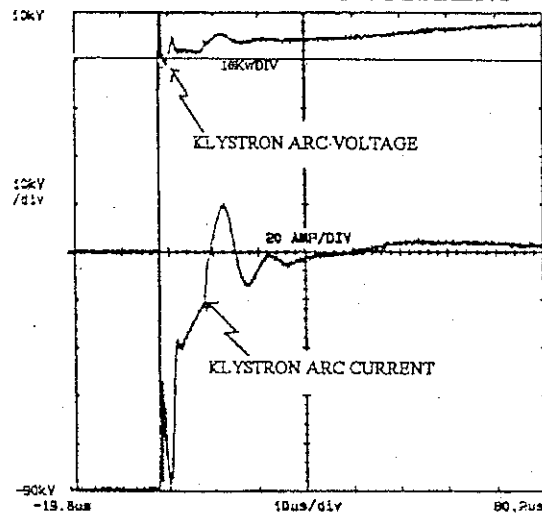


Figure 4 Klystron Arc current & voltage

The distribution cable discharge current is reduced as well as a forced current zero by the use of small 200 uhy inductors in the termination tank. With the crowbar his

combination allows less than 5 joules to reach the klystron and less than 20 joules without the crowbar operating. The crowbar has a delay time of approximately 10 microseconds before it conducts current.

AC CURRENT WITH KLYSTRON ARC

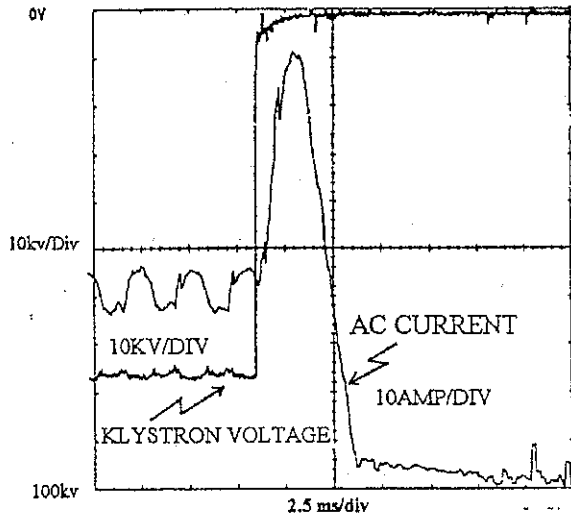


Figure 5 klystron arc line current

When the klystron arcs the primary current rate of rise is limited by the primary filter inductor until the inductor is bypassed and the primary SCR's are turned off. The complete interruption of current on the primary side last from 4 to 8 milliseconds depending on the exact time of the arc with respect to the firing of the SCR's. As you can see the primary current only double under this fault condition for 2 milliseconds.

1.4 Power supply size

Because of size constraints and the fact that all the components would be at high voltage and high power the SCR Primary controller and SCR Crowbar were mounted in the transformer oil tank in isolated oil tanks. The tanks have oil to oil high voltage feed through to prevent cross contamination of the oil in the event a crowbar or SCR stack would need maintenance.

The crowbar tank consists of 4 SCR stacks with snubber network to match the output cable impedance. In addition there are two voltage dividers to monitor the high voltage output.

The SCR Primary control tank consist of 12 SCR stacks with 12 snubber networks to limit the rate of rise of voltage and damp the stray capacitance ringing.

The transformer tank contains two filter inductors two power transformers, one phase shifting transformer, 4 filter diode rectifier stack, 4 filter capacitors, 8 filter resistors loads, and 4 power diode rectifier stacks. See figure 6

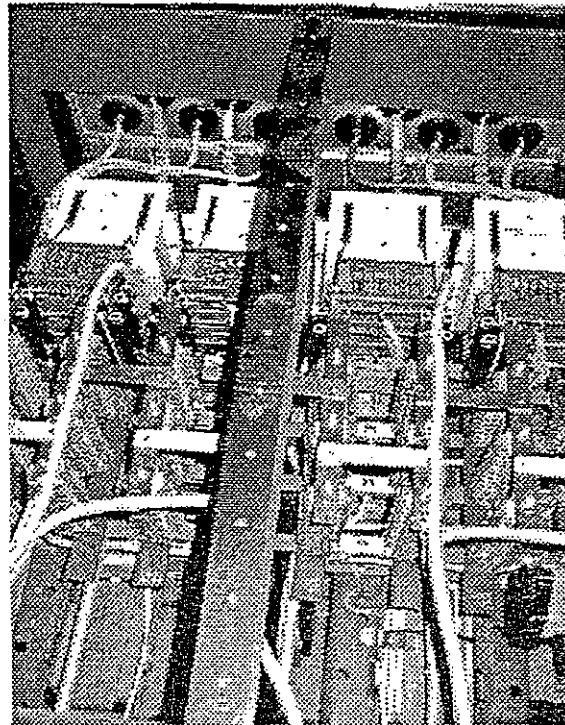


Figure 5 Internal power supply tank parts

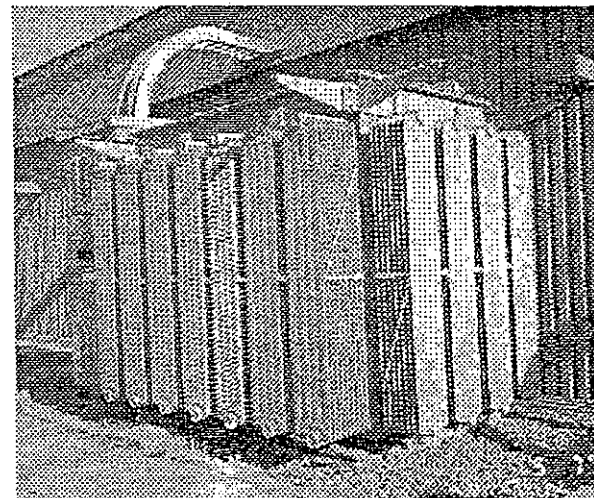


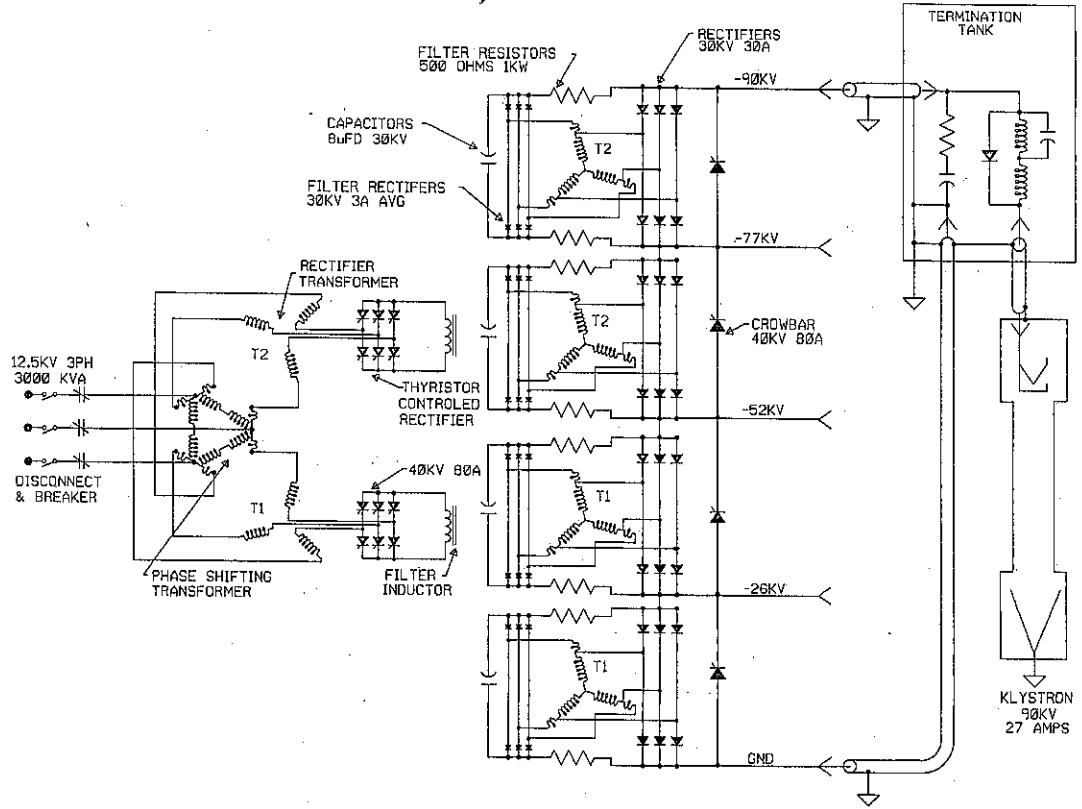
Figure 6 Power supply installation

The power supply transformers, rectifiers, and transformers tank were manufactured by NWL Transformer. The SCR Primary controller and the SCR crowbar was manufactured and tested by SLAC and installed by NWL into their transformer tanks.

REFERENCES

- [1] 'HV-Power Supply for Neutral-Injection Experiments Wendelstein VII and ASDEX' by D Hrabal, R. Kunze, W. Weigand, Proceedings of the 8th Symposium on Engineering Problems of Fusion Research, IEEE Pub No. 79CH1441-5 NPS. Page 1005-1009
- [2] 'Installing and Operating Klystron YK1360' PHILIPS manual, Issue #1 May 1996, Rev. Sept 1996 page 11.

REV	DESCRIPTION	OPR	CHKR	ENGR	DATE
C1	REV'D PER ENG CHANGES	WSG	JO	RLC	8/24/83



STANFORD LINEAR ACCELERATOR CENTER U.S. DEPARTMENT OF ENERGY		LOAD FILE NAME: 7307901.S01	SHEET 1 OF 1
STANFORD UNIVERSITY STANFORD, CALIFORNIA		PEP II RF PWR SUPPLY KLYSTRON POWER SUPPLY SCHEMATIC	
PROPRIETARY DATA OF STANFORD UNIVERSITY AND/OR U.S. DEPARTMENT OF ENERGY. REPRODUCTION SHALL NOT FURNISH THE INFORMATION WITHIN UNLESS GRANTED SPECIFIC PERMISSION OF STANFORD UNIVERSITY.			
ENGR R. CASSEL	DATE 2/14/83	APPROVAL R. CASSEL	
OPTR W. ORECKI	DATE 12/17/82		
CHIEF J. OLSZEWSKI	DATE 2/14/83	J. OLSZEWSKI	
		SD-730-790-01-C1	

HER RF 8-3 Klystron HVPS

Reset

Print Exit
Go To Help

Contactor

Clear filament faults
before closing contactor:

Fila Status/Timer(Sec)

Contactor Closed
 Contactor Open
 Contactor Status
 Contactor Ready

Klys Output Pwr (kW)
 Klys Coll Pwr (kW)
 Klys Efficiency (%)
 RF PLC Voltage (kV)
 RF PLC Current (Amp)
 RF PLC Coll Pwr (kW)
 Klys Perveance
 HVPS Current (Amp)
 HVPS Voltage (kV)
 HVPS Power (kW)

Voltage Control (kV)

Fast Turn-On Voltage

Stn Turn-On Voltage

Max Volt Status
 Regulator Voltage
 Max Voltage Rbck

Stn State:

In ON_FM.

Latching Faults These faults need manual reset:

Over Voltage
 Klystron Arc
 Transformer Arc
 Crowbar
 Crowbar from RF
 Emergency Off
 AC Current

Over Temperature
 Oil Temperature
 Oil Level
 Transformer Press
 Transfmr Vac/Press
 Open Load

WG Air NIRP Faults (clear ALL these before HVPS is allowed ON):

HER RF 4-1
 HER RF 8-1
 HER RF 8-3
 HER RF 8-5
 HER RF 12-1
 HER RF 12-3
 HER RF 12-5
 HER RF 12-6

Supply Status

AC Current (Amp)
 12 kV Available
 AC Auxiliary Pwr
 DC Auxiliary Pwr

Enerpro Fast Inhibit
 Enerpro Slow Start
 Supply Status
 Supply Ready

PPS

SCR

1
 2

HER RF 8-3 Station

Beam Current (mA)

Beam Abort ON

<input type="button" value="Klystron"/>	<input type="button" value="Circulator"/>	<input type="button" value="HVPS"/>	<input type="button" value="Waveguide"/>	<input type="button" value="Cavities"/>
<input type="button" value="Vacuum"/>	<input type="button" value="Flow"/>	<input type="button" value="Temps"/>	<input type="button" value="Phase/Pwrs"/>	<input type="button" value="Arc Intlks"/>
<input type="button" value="System"/>	<input type="button" value="Tuners"/>	<input type="button" value="Feedback"/>	<input type="button" value="Modu Diags"/>	

MATLAB Apps

In ON_FM.

State Control:

Auto Reset Tries Left

Max Cav Vacuum (Torr)

Max Cav Gap Volt (kV)

Max Klys Fwd Pwr (kW)

HVPS Loop OFF PROG ON

Sta Online/offline ONLINE OFF

Sta Gap Volt (kV)

Sta Phase (Deg)

Swept Sine 400_HZ 1000_HZ

Beam Tickle OFF

Contactor CLOSED

Clear filament faults before closing contactor.

Drive Pwr Setpoint (W)

High Pwr Drive Pwr (W)

Saturatd Drive Pwr (W)

Klystron

Filament Voltage (V)

Filament Current (Amp)

Fila Status/Timer(Sec)

Drive Power (W)

Vacuum Level (Torr)

Forward Power (kW)

Reflected Power (kW)

HVPS Voltage Control (kV)

Max Voltage (kV)

HVPS Voltage (kV)

HVPS Current (Amp)

HVPS Power (kW)

Collectr Power (kW)

Cavity A	Cavity B	Cavity C	Cavity D
<input type="text" value="2.2e-09"/>	<input type="text" value="2.0e-09"/>	<input type="text" value="7.0e-15"/>	<input type="text" value="5.3e-15"/>
<input type="text" value="127"/>	<input type="text" value="150"/>	<input type="text" value="147"/>	<input type="text" value="181"/>
<input type="text" value="98"/>	<input type="text" value="149"/>	<input type="text" value="102"/>	<input type="text" value="122"/>

Sta Gap Volt (kV)

Cavity A Volt (kV)

Cavity B Volt (kV)

Cavity C Volt (kV)

Cavity D Volt (kV)

Timer Posn (mm)

A -30.00

B

C

D

HER RF 8-3

Klys and Circ

Reset

Print

Exit

Go To

Help

Station

HVPS

Waveguide

Cavities

Tuners

Feedback

Type of Klystron

PHILLIPS

Vacuum
uAmp

-0.00

Klys Arc

OK

Max Voltage (kV)

83.30

Status

OK

Circ Arc

OK

Water Supply

Sply Temp (degC) 35

Delta Temp (degC)

14

Rtn Flow Switch

OK

Collector

Klys Body 1

1

OK

Klys Body 2

2

OK

N/A for Phillips

2

OK

Circulator

OK

OK

Circ Input Temp

OK

Klystron Solenoids

Main

Bucking

Voltage (V) 128.6

3.62

Current(Amp) 38.9

5.03

Interlock OK

OK

On/Off Stat ON

ON

Klystron Filament

On/Off Stat ON

Timer Override

Override

Filament & Solenoid
On/Off

Secs Left 0

ON

Voltage (V) 74.3

Power (W)

Current(Amp) 7.44

552.7

Circ HCW Supply

Sply Temp (degC) 23

Rtn Flow Switch

Load Rtn (degC) 22

OK

Klystron Window Air Supply

Delta Temp(degC) -5

Rtn Flow Switch

Rtn Temp (degC) 46

OK

HVPS

Voltage (kV) 70.88

Klys Perveance

1.05

Current(Amp) 19.71

Power (kW)

1398

HVPS volt Plot

RF Power (kW)

KlysOut Frwd 584

Klys Pwr Plot

KlysOut Refl 3.7

Normal (No Beam)

Klys Power (kW) 0.0

Klys Collectr 8.15

Hi Drive Setting

Klys Power (kW) 700.0

Circ Ld Frwd 21.8

Circ Ld Refl 1.4

Klys Eff (%) 42

Klys Gain(dB) 42.9

Setpoint 44.7000

Klystron Drive Power (W)

Drive Power 29.8

Drive Pwr Plot

Setpoint 14.5

Amplifier Temp (degC)

High Pwr 17.0

24

Saturation 40.0