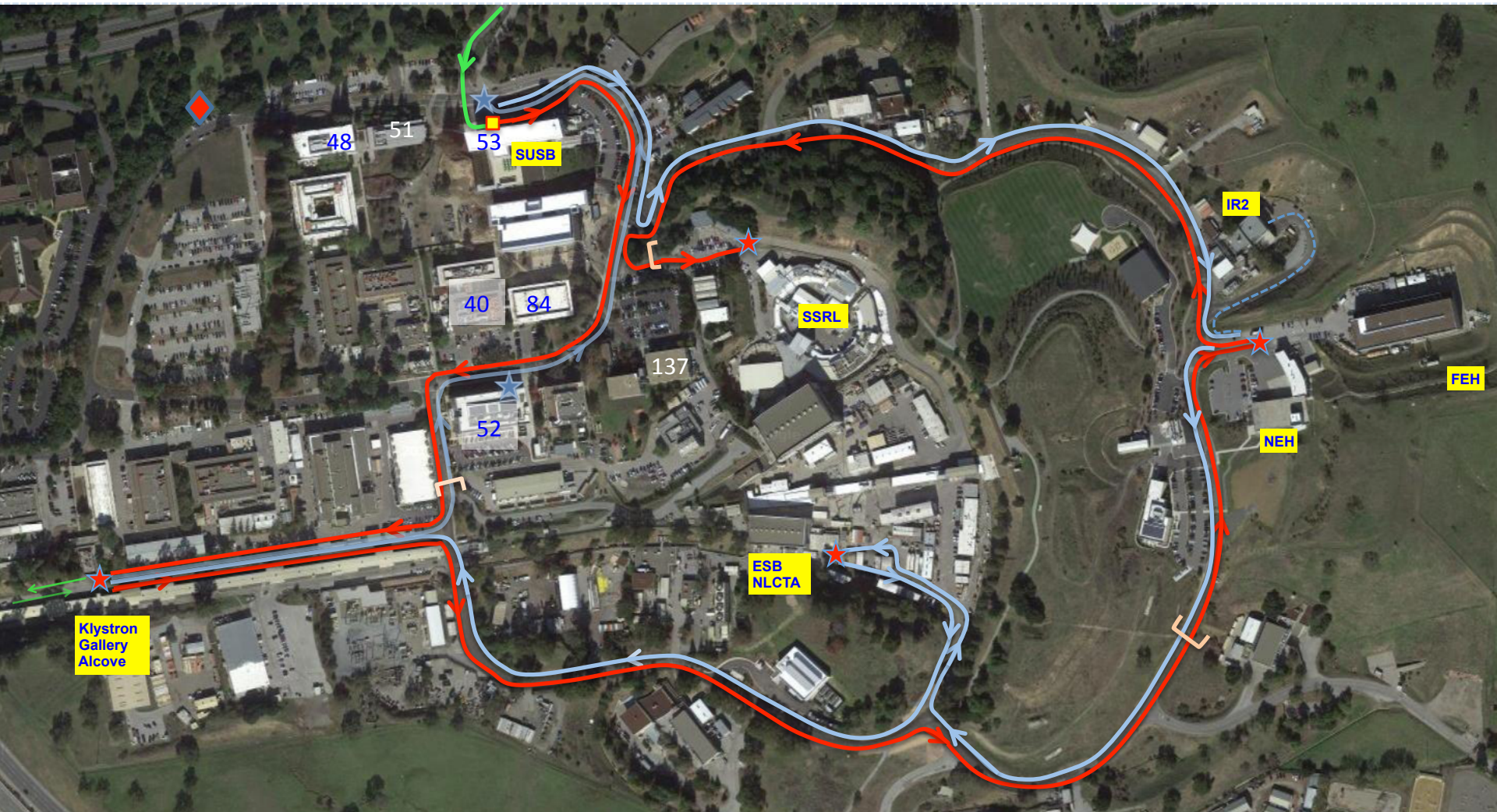


Mar/22/2017 Prospective graduate student open house SLAC tour bus route



— Both Tour A+B
◆ Bus waiting spot

— Tour A (Accelerator/IR2)
■ Tour start/end departure

— Tour B (Photon Science)
★ End tour A drop off points

Bus A Schedule

- 1:25pm:** Pick up students at the junction between Panama and Via Ortega.
- 1:30pm:** Depart for SLAC
- 1:40pm:** First stop at SLAC SUSB main entrance bay to pickup guides and drop off non-tour students. Gather all Tour A students on this bus.
- 1:45pm:** Heading for Klystron Gallery via Sector 30 Gate. Drop off students at Klystron Gallery Alcove for tour and go up along Linac to turn around at a convenient spot then wait at Alcove.
- 2:20pm:** Re-board students and head for LCLS FEH/XRT. Drop off student for tour and wait.
- 2:55pm:** Re-board students and head for SSRL. Drop off students at SSRL and then head for “Bus waiting spot” on the map off the Ring Road to wait. (Guides will walk students out after SSRL tour).
- 3:30pm:** Re-board students and return to office area. First drop off near bus stop at Buildings 52/84/40; then drop off at SUSB (53).
- 3:35pm:** Go to “Bus waiting spot” on the map off the Ring Road.
- 4:50pm:** Go to SUSB main entrance bay to pick up students.
- 5:00pm:** Depart back to Stanford campus. Drop off back to the Via Ortega starting point.

Bus B Schedule

- 1:25pm:** Pick up students at the junction between Panama and Via Ortega.
- 1:30pm:** Depart for SLAC
- 1:40pm:** First stop at SLAC SUSB (53) main entrance bay to pickup guides and drop off non-tour students. Gather all Tour B students on this bus.
- 1:45pm:** Heading for IR2 via PEP ring road outside the fenced area. Drop students off at NEH parking lot (tour group walks to IR2) and wait.
- 2:20pm:** Re-board students and head for Research Yard End station B. Drop off student for tour and wait.
- 2:55pm:** Re-board students and head for Klystron Gallery Alcove. Drop off students at Alcove for tour and go up on Linac to turn around then wait at Alcove.
- 3:30pm:** Re-board students and return to office area. First drop off near bus stop at Buildings 52/84/40; then drop off at SUSB (53).
- 3:35pm:** Go to “Bus waiting spot” on the map off the Ring Road.
- 4:50pm:** Go to SUSB main entrance bay to pick up students.
- 5:00pm:** Depart back to Stanford campus. Drop off back to the Via Ortega starting point.