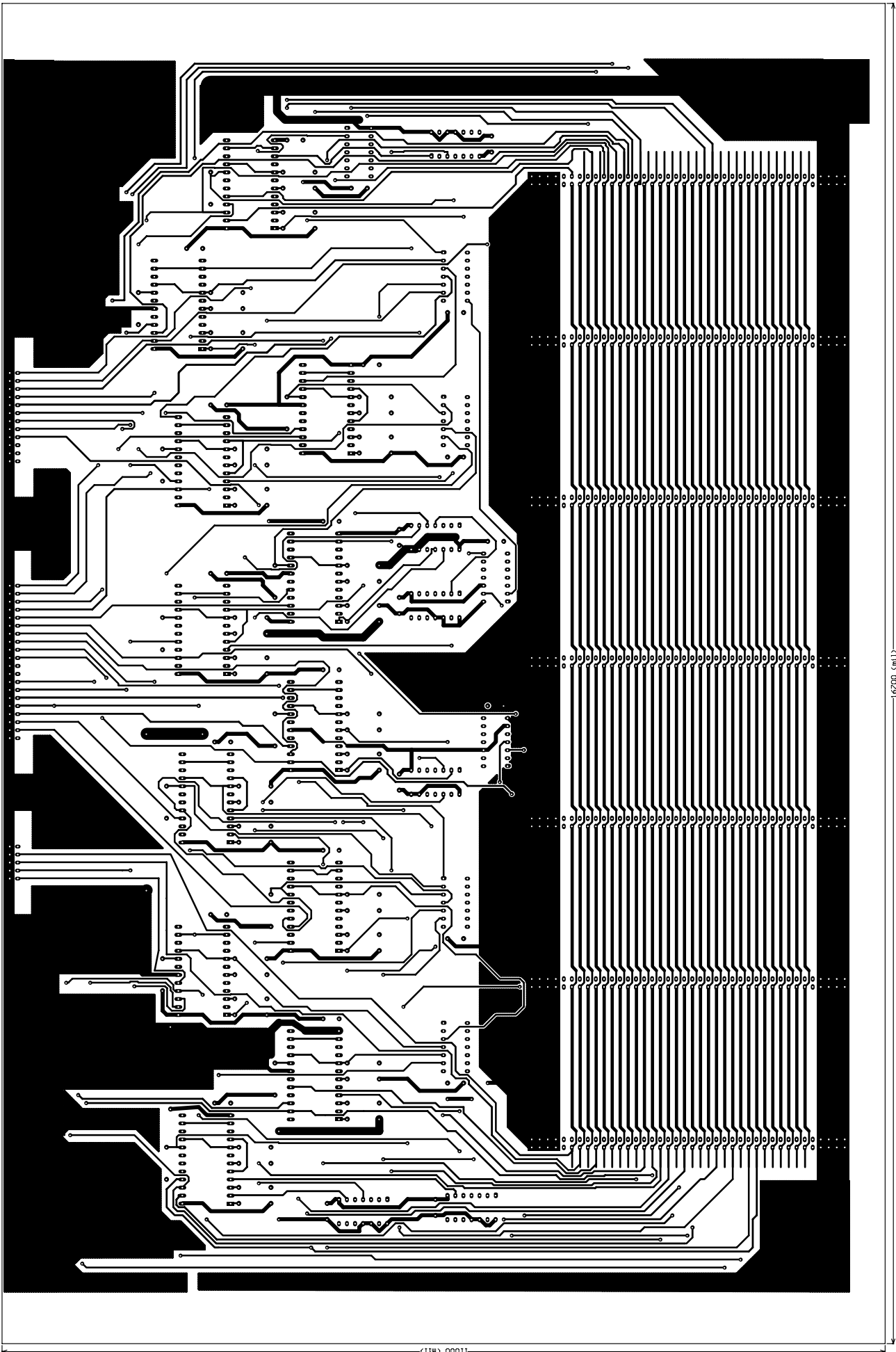


BATMAN-1 DIRC safety system Designed by Alexandre (Sasha) Telnov AUTELNDUUBL.GDU

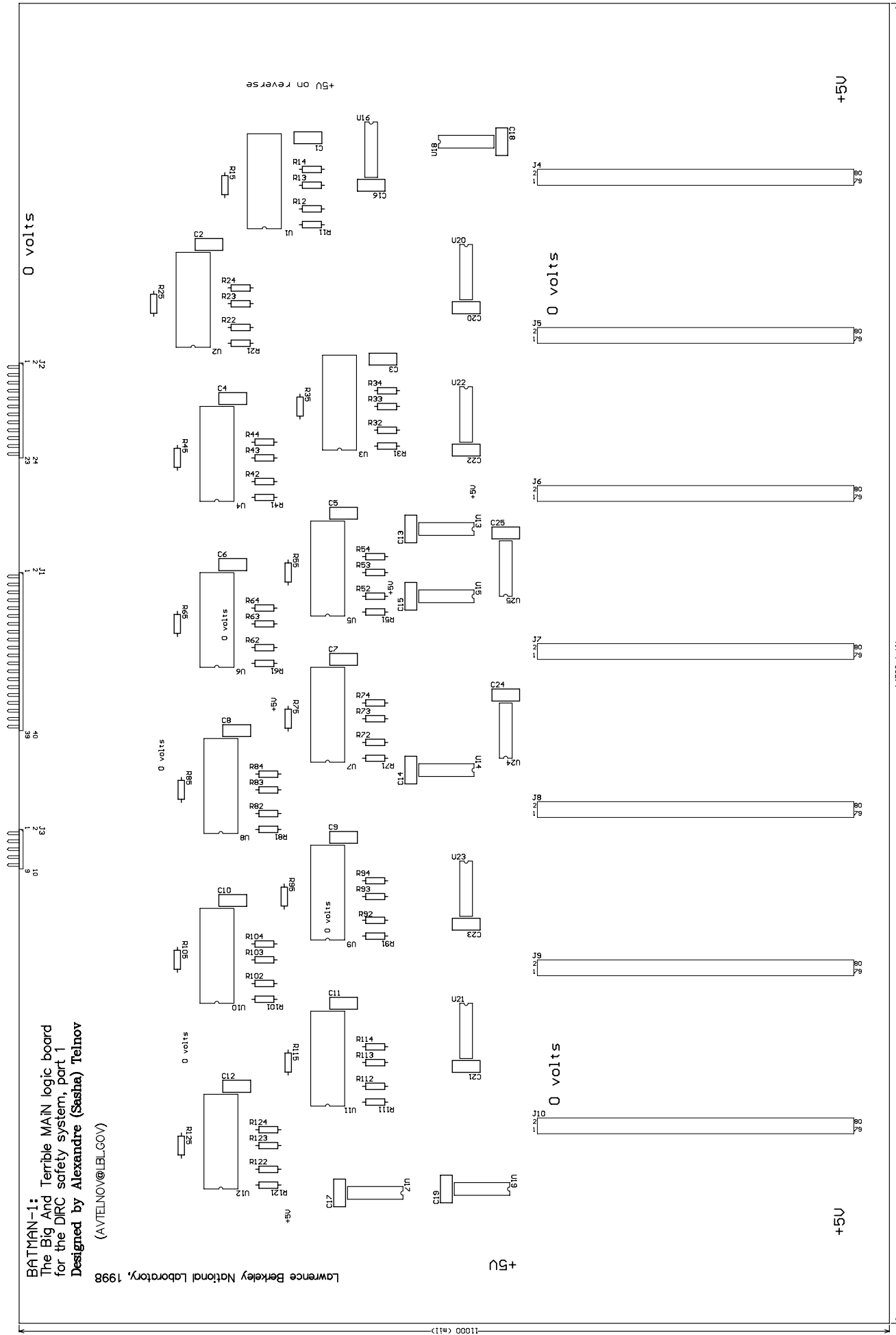
16200 (mm)



16700 (mm)

BATMAN-1:
 The Big And Terrible MAIN logic board
 for the DIRC safety system, part 1
 Designed by **Alexandre (Sasha) Telnov**
 (AVTELNOV@LBL.GOV)

Lawrence Berkeley National Laboratory, 1998



0 volts

0 volts

0 volts

0 volts

0 volts

+5V

+5V

+5V

0 volts

0 volts

0 volts

0 volts

0 volts

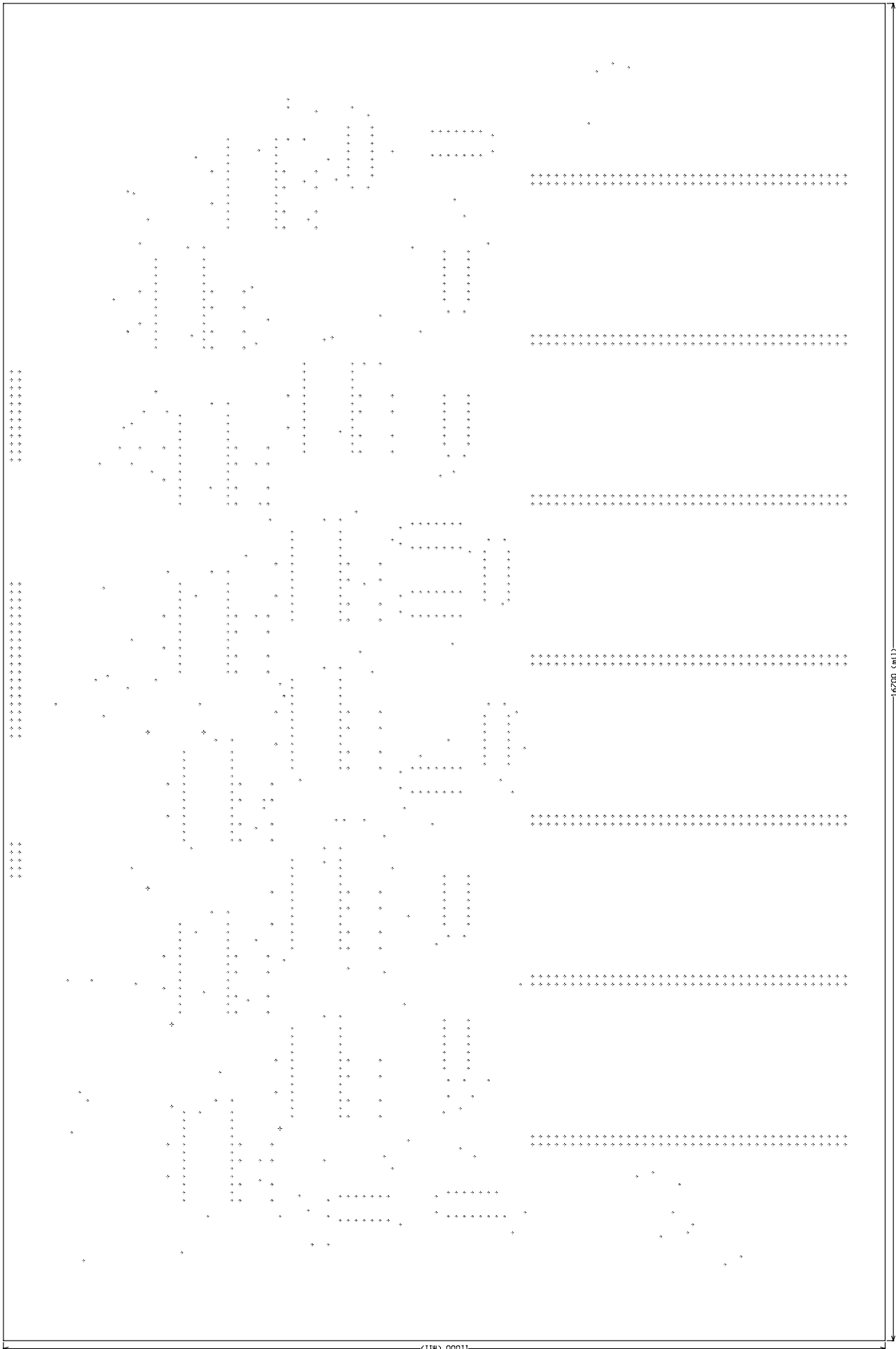
0 volts

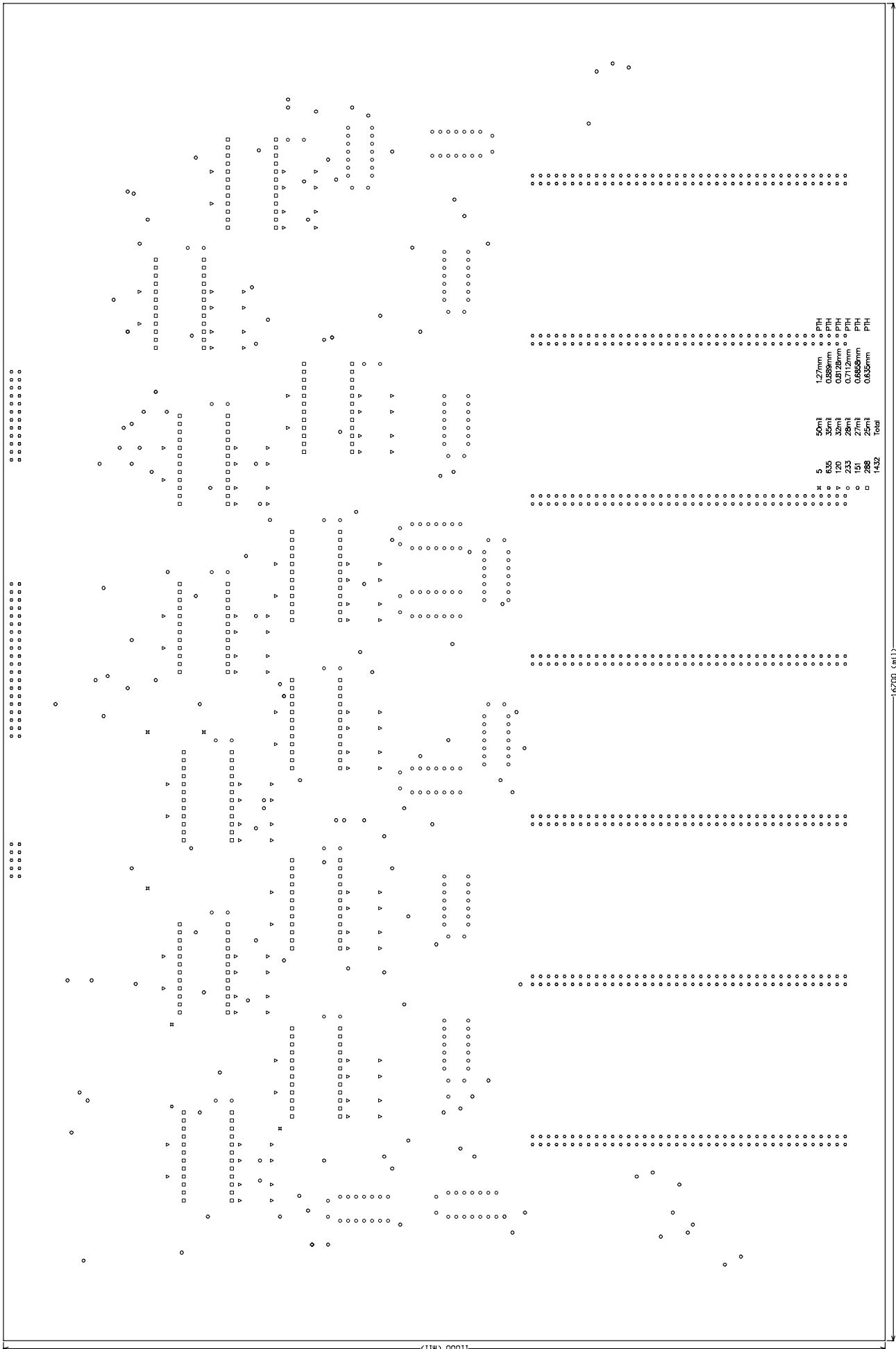
0 volts

0 volts

16200 (m11)

10000 (m11)





5	50mil	1.27mm	PTH
635	35mil	0.889mm	PTH
120	32mil	0.8128mm	PTH
233	28mil	0.7112mm	PTH
151	27mil	0.6858mm	PTH
288	25mil	0.635mm	PTH
1432	Radial		

16700 (mil)